



TOW-TRUST TOWBARS

Tow-Trust Towbars Technical Support
Email - technical@tow-trust.co.uk
Phone: 01827 717412 / WhatsApp: 07778 775135

In partnership with
ConWysAG

PRO-PARK-RT-2 Renault Trafic (2025 >) Fitting Instructions

Part Number	PRO-PARK-RT-2	Document Number	TECPRO-PARK-RT-2	Issue Number	V1.0
Vehicle Make	Renault	Vehicle Model	Trafic	Model Year	2025>

Contents

Item	Description	QTY	Item	Description	QTY	Item	Description	QTY
 CON-22500761CR	2 x Extension cables	2	 ASG-17027	Parking Sensor Carrier	2	 ASG-17028	Parking Sensor Bung	2
 DT-PRO-PARK	Drilling Template	1	 PRO-PARK-AN12	120* 4.8 Cable Tie Black	2	 PRO-PARK-AM10 PRO-PARK-AM10Y	100* 2.5 Cable Tie Black 100* 2.5 Cable Tie Yellow	6 6

Please note:

APRO-STEP is NOT included and must be ordered separately.

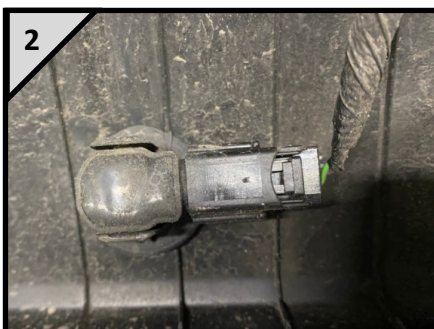
A 27mm Hole Cutter is NOT included.

1



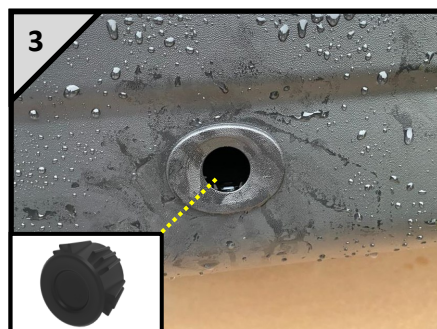
If required remove the bumper to gain access to the reversing sensors.

2



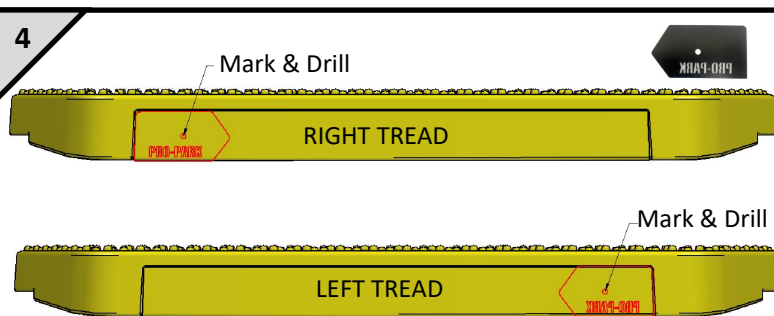
Remove the 2 OEM parking sensors from the center of the rear bumper, leaving the carriers in the bumper.

3



Insert the Parking sensor bungs into the OEM carriers to blank off the holes in place of the OEM Sensors. The bungs push in from the outside.

4



Drill
Ø27mm
holes

Using the **DT-PRO-PARK** drilling template place the template onto each step tread as shown above. Carefully mark and cut one 27mm hole per tread for the carrier to fit into the tread. (Note: Please refer to the image above).





TOW-TRUST TOWBARS

Tow-Trust Towbars Technical Support

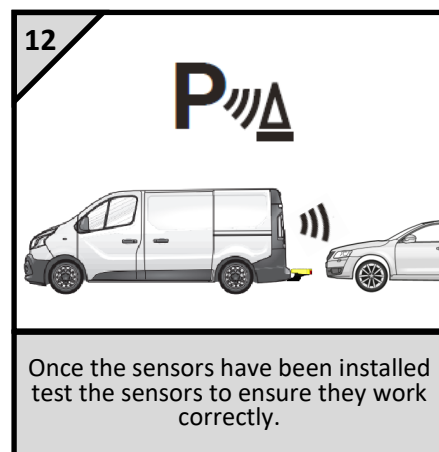
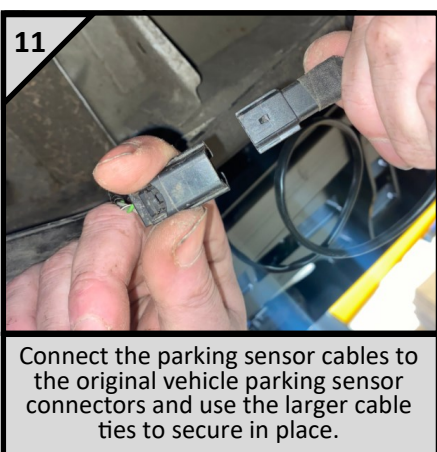
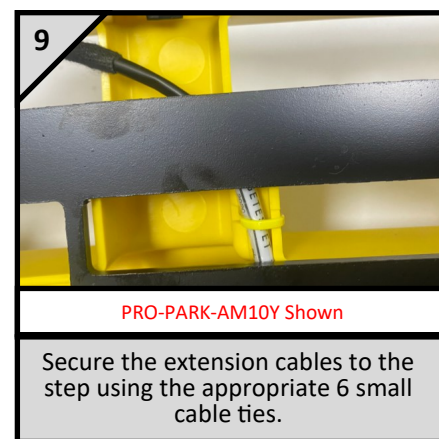
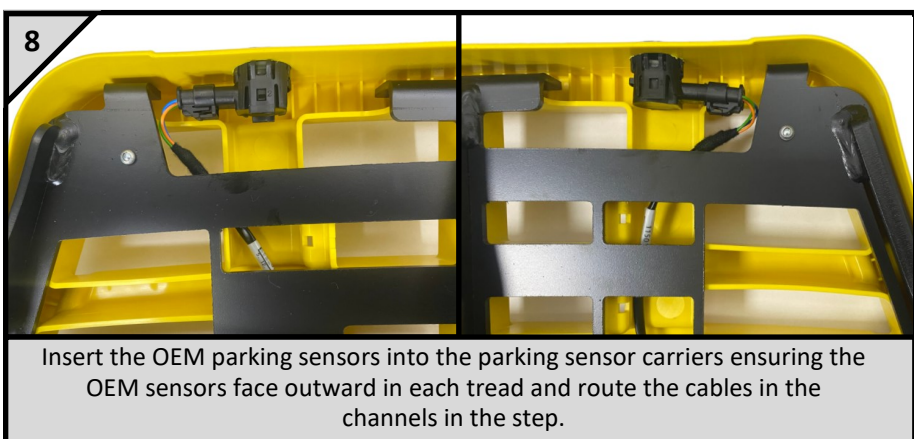
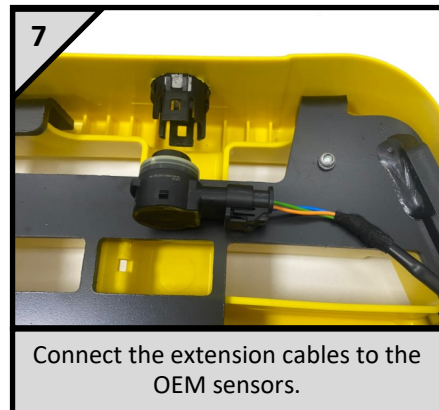
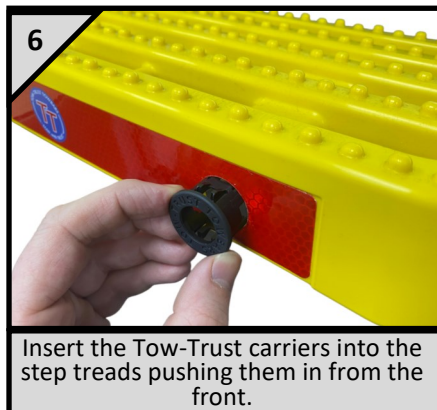
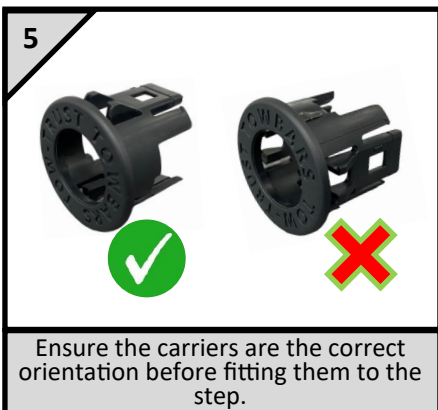
Email - technical@tow-trust.co.uk

Phone: 01827 717412 / WhatsApp: 07778 775135

In partnership with
ConWysAG

PRO-PARK-RT-2 Renault Traffic (2025 >) Fitting Instructions

Part Number	PRO-PARK-RT-2	Document Number	TECPRO-PARK-RT-2	Issue Number	V1.0
Vehicle Make	Renault	Vehicle Model	Traffic	Model Year	2025 >



IMPORTANT

Please ensure the PRO-STEP (**not supplied**) is fitted as per the installation instructions and all bolts are torqued to the correct torque setting.

We are always here to support you!

Call: 01827 717412

Email: technical@tow-trust.co.uk

WhatsApp: 07778775135

