



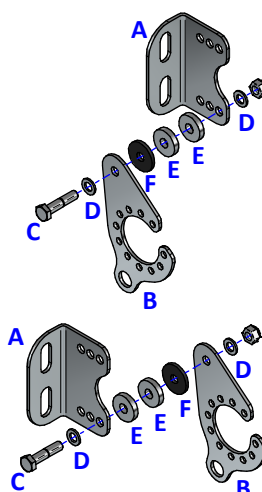
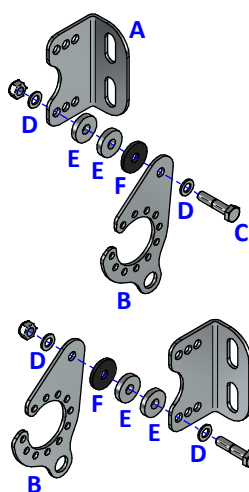
TTFP Tow-Trust Flip Up Socket Plate

Item	Qty	Description	Item	Qty	Description
A	1	Towbar Mounted Bracket	C	1	M8 x 35 Bolt & Nyloc Nut
B	1	Socket Plate	D	2	8 x 15 Flat Washers
			E	2	8 x 25 H/D Flat Washers
			F	1	Neoprene Washer

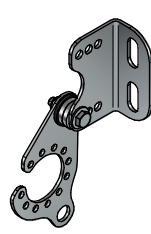
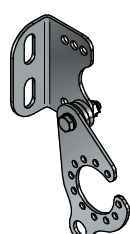
1. Attach Item A in the position show on the fitting instructions supplied with the Towbar.
2. Choose the setting which suits the vehicle the best and attach item B to item A using item C with items D and E (when required) with item F against item B.

LH

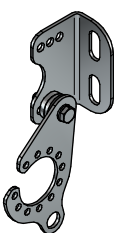
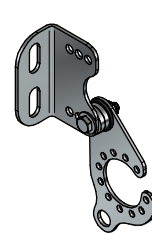
RH



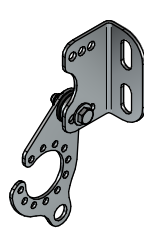
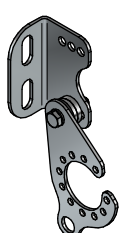
Setting 1



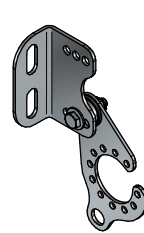
Setting 4



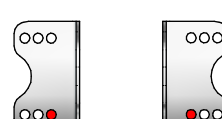
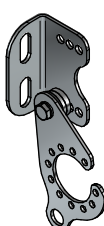
Setting 2



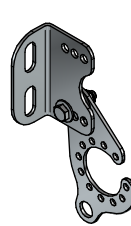
Setting 5



Setting 3



Setting 6



Notes:

1. For Torque settings see general notes overleaf.
2. Nose load limits and vehicle manufacturer's trailer / caravan weight limits must be observed.
3. We recommend the use of PRO-TOW Couplings with all our products.