



TAUT5AVK Auto-Trail (Imala 615,620,625,715,720,726,730,734,736) (Expedition C63,C71,C72) (T-line EKS,FB,RL,LB,RB,SB) 2014>

Item	Qty	Description	Item	Qty	Description	Torque Setting
A	1	TAUT5A Crossbar	F	1	Left Hand Flip Up Socket Plate (TTFP/LH)	
B	2	Side Arms	G	2	M12 x 22 Bolts & S/P Washers	100 Nm
C	6	Clamp Plates / Spacer Plates	H	2	M12 x 25 Bolts & S/P Washers	100 Nm
D	4	40mm O/D x 62mm Long Spacer Tubes	J	4	M12 x 45 Bolts & Nyloc Nuts	100 Nm
E	1	6#20 Detachable Neck	K	4	M12 x 130 (10.9) Bolts	130 Nm
			L	12	12 x 25 Flat Washers	
			M	8	12 x 40 Flat Washers	
			N	4	M12 Nyloc Nuts	

Note: It is recommended that the crossbar is mounted in a position which gives approximately 420mm ball height, with the Towball in the top setting. The neck should be fitted to a position giving a minimum 85mm Towball clearance, as shown in the ball distance and height guide.

This can be adjusted to suit individual requirements.

Towbar Installation:

- If your vehicle has corner steadies fitted remove the fixings shown in red from the chassis as shown in **Figure 1**. **Note:** These fixings will not be reused.
- Loosely fix items **C** to the outside face only and items **D** inside each chassis extension using items **K** and items **M** as shown in the figures relevant to your chassis floor. **Note:** Items **C** can be used inside the chassis rail as a packer if required, and items **M** fitted over item **B** without the clamp plate for low floor models.
- Loosely fix items **B** to the inside face of each chassis extension with items **C** using items **M** and items **N**, in the correct position aiming to be **125-145mm** from the lower internal edge of the rear panel as shown in **Figure 4**.
- Using **Figures 5 and 6** as a guide loosely fix Item **A** to items **B** in the chosen position using items **J** and items **L**, aiming to be **435-455mm** from Item **A's** mounting point when on level ground.
- Loosely fix item **E** and Item **F** to item **A** using items **G** with items **L** and items **H** with items **L** to the position best suited to the vehicle.
- Fully tighten all fixings ensuring the towbar is rigid, square and secure.

Figure 1

OEM Corner Steadies

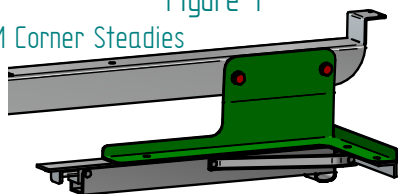


Figure 2

Low Floor Chassis

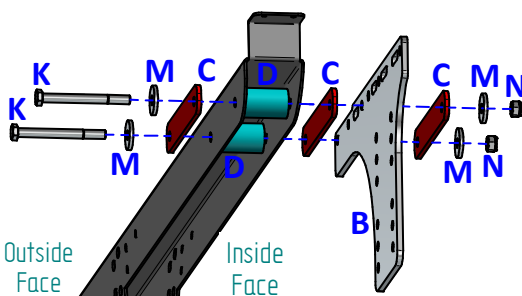


Figure 3

High Floor Chassis

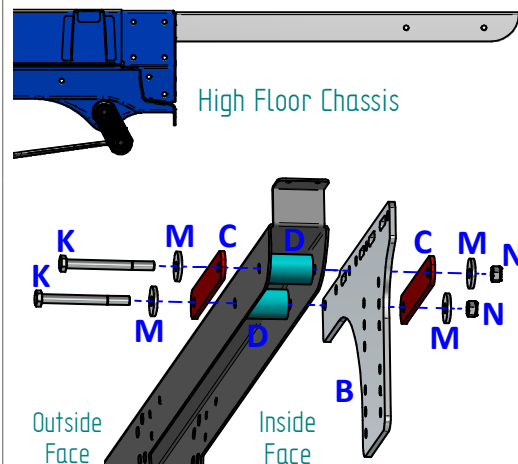
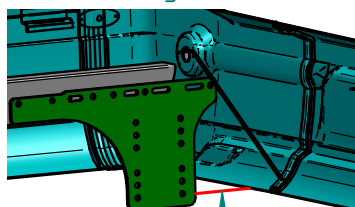
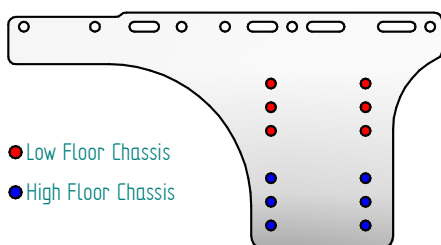


Figure 4



125mm-145mm

Figure 5



● Low Floor Chassis

● High Floor Chassis

Figure 6



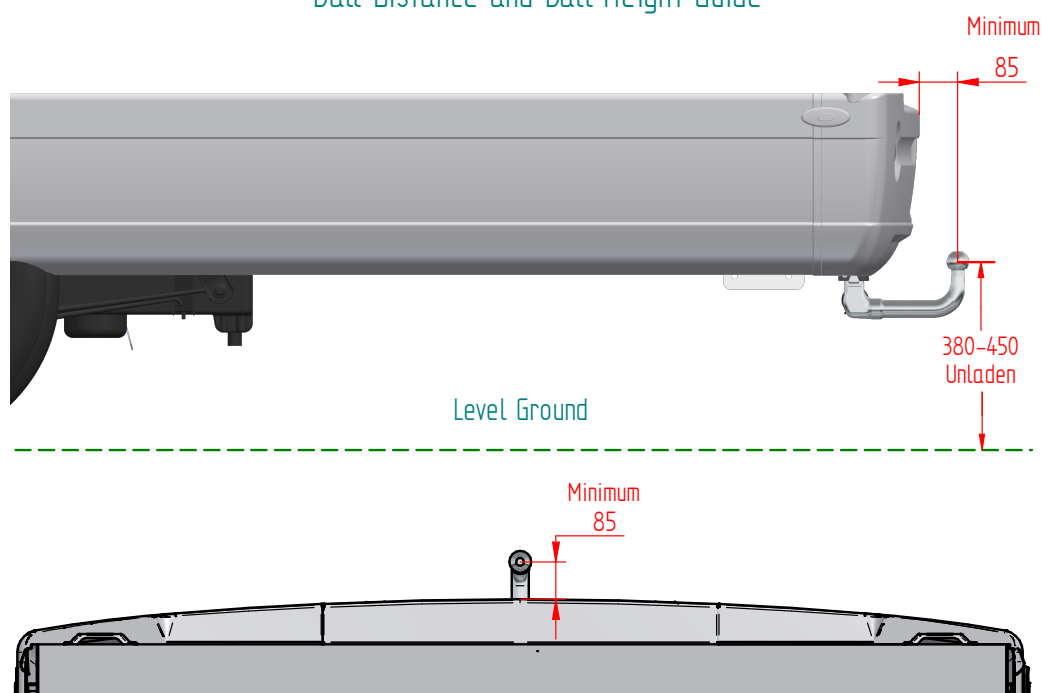
435mm-455mm

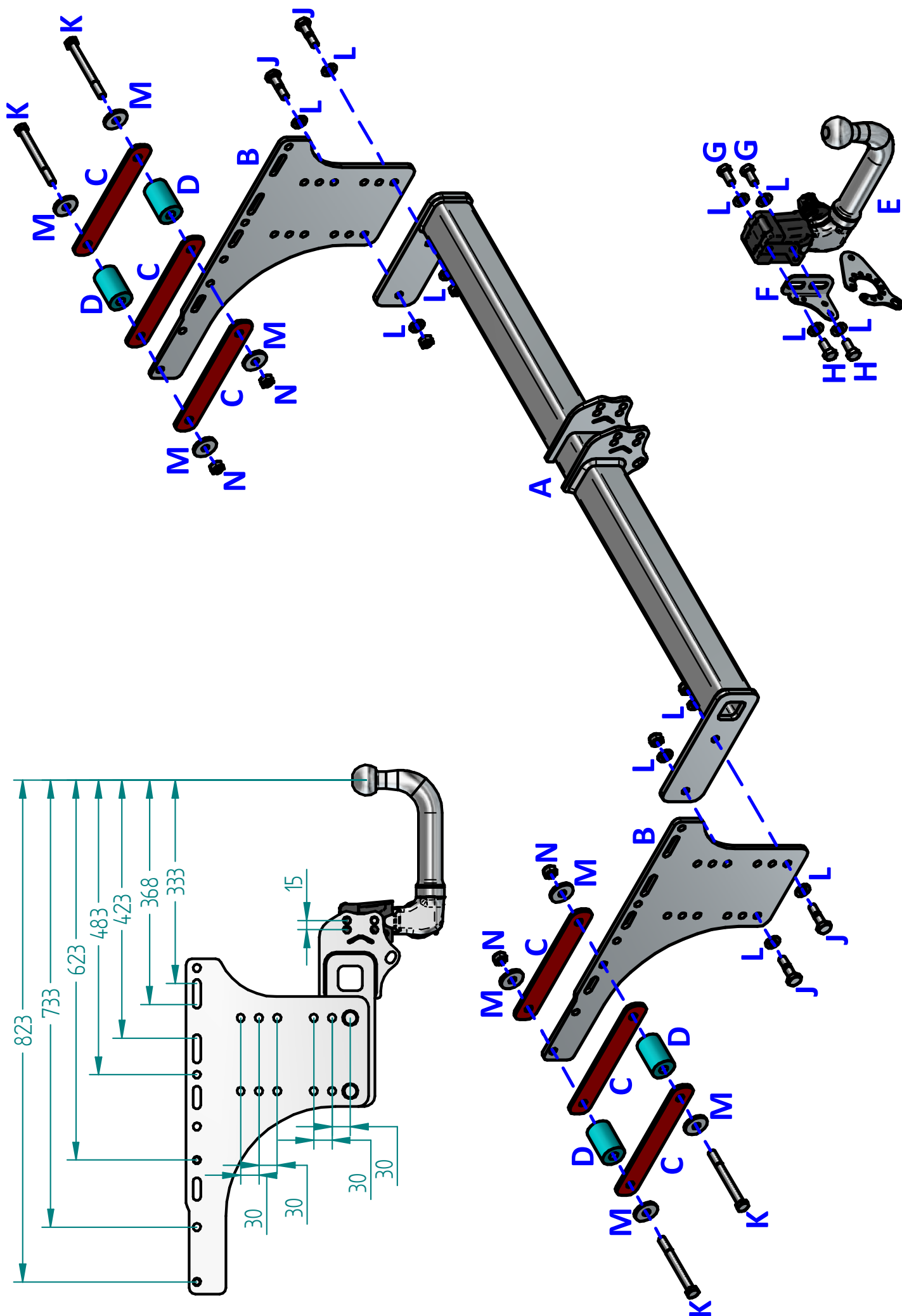
-- Ground

● Inner Neck Setting

● Outer Neck Setting

Ball Distance and Ball Height Guide





- Notes:**
1. For Torque settings see the column next to each item in the list.
 2. Nose load limits and vehicle manufacturer's trailer / caravan weight limits must be observed.
 3. We recommend the use of PRO-TOW Couplings with all our products.