

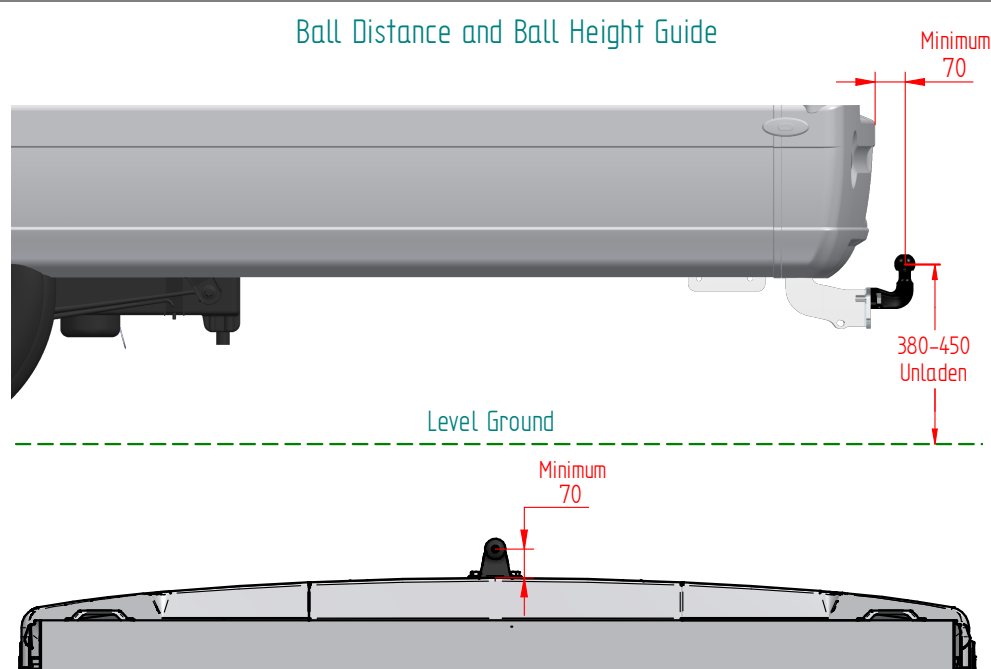
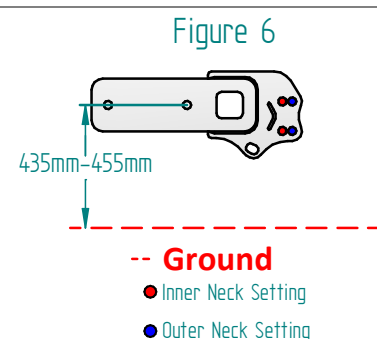
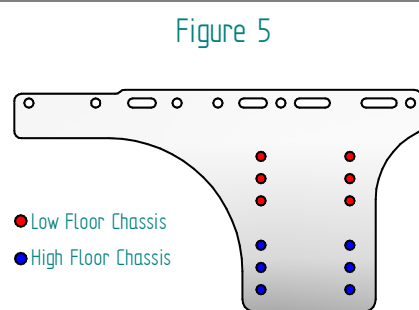
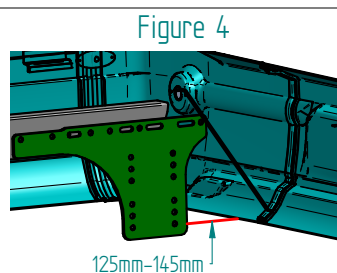
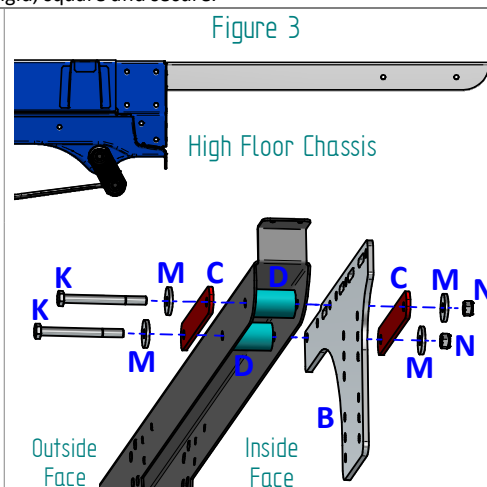
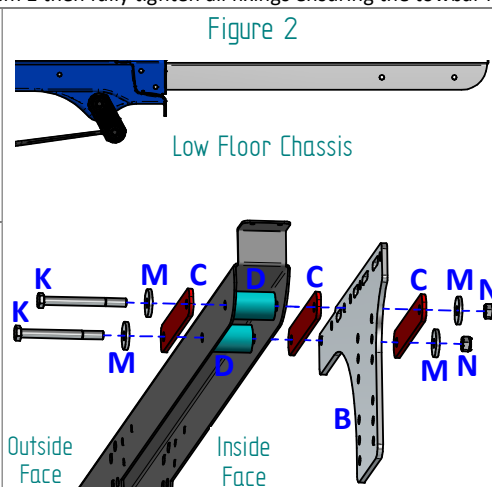
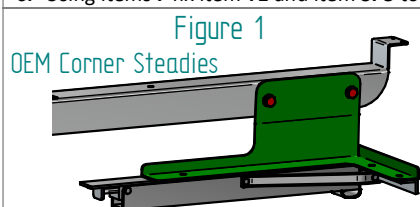
TAUT5A Auto-Trail (Imala 615,620,625,715,720,726,730,734,736) (Expedition C63,C71,C72) (Tracker EKS,FB,RL,LB,RB,SB) 2014>

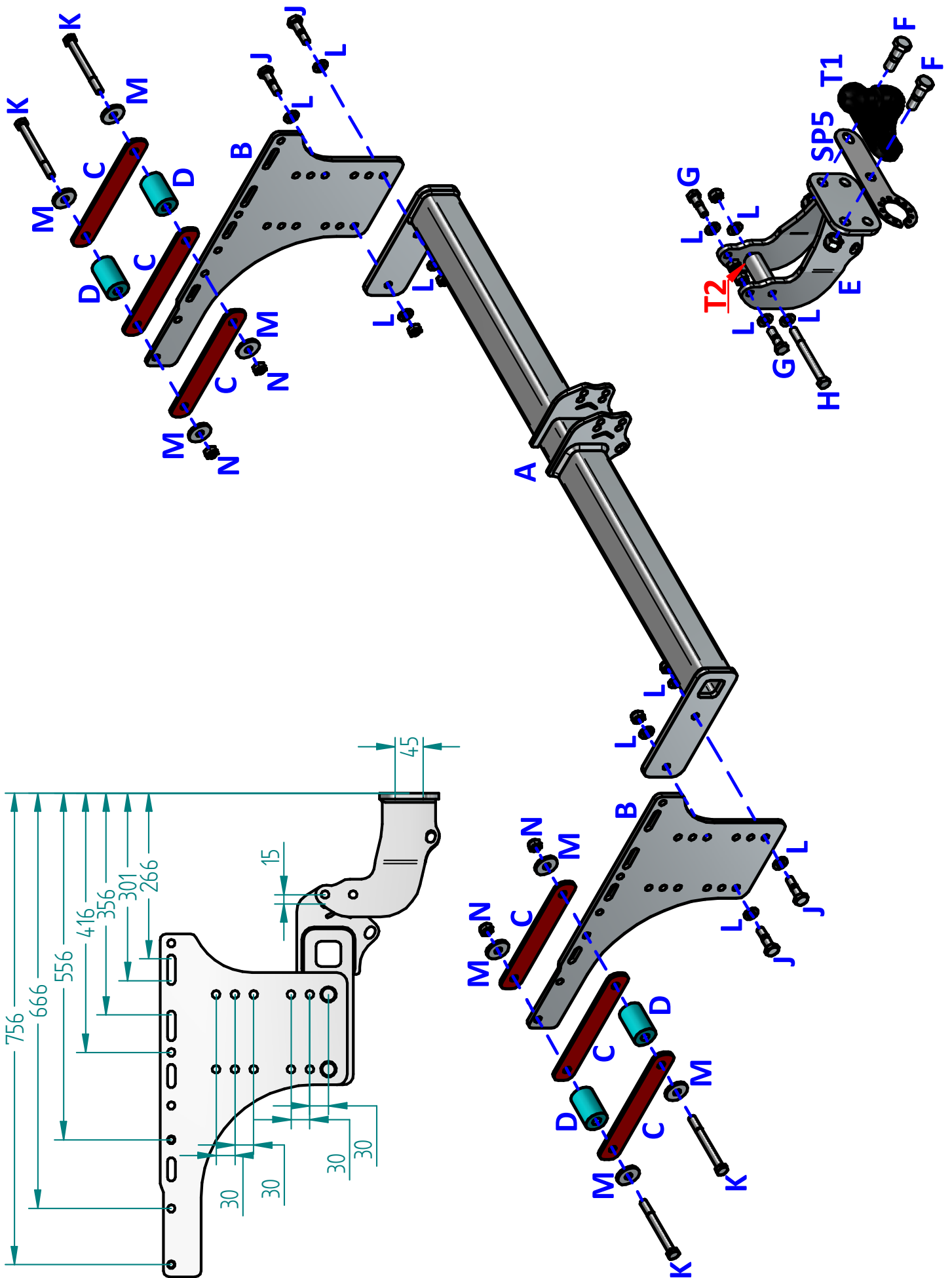
Item	Qty	Description	Item	Qty	Description	Torque Setting
A	1	TAUT5A Crossbar	F	2	M16 x 50 Bolts & Nyloc Nuts	215 Nm
B	2	Side Arms	G	2	M12 x 40 Bolts & Nyloc Nuts	100 Nm
C	6	Clamp Plates / Spacer Plates	H	1	M12 x 120 (10.9) Bolts & Nyloc nuts	130 Nm
D	4	40mm O/D x 62mm Long Spacer Tubes	J	4	M12 x 45 Bolts & Nyloc Nuts	100 Nm
E	1	Extension	K	4	M12 x 130 (10.9) Bolts	130 Nm
SP5	1	Socket Plate 5	L	12	12 x 25 Flat Washers	
T1	1	ATT-T1 Standard Towball	M	8	12 x 40 Flat Washers	
T2	1	30 mm O/D 60mm Long Spacer Tube	N	4	M12 Nyloc Nuts	

Note: It is recommended that the crossbar is mounted in a position which gives approximately 420mm ball height, with the Towball in the top setting. The neck should be fitted to a position giving a minimum 70mm Towball clearance, as shown in the ball distance and height guide. This can be adjusted to suit individual requirements.

Towbar Installation:

- If your vehicle has corner steadies fitted remove the fixings shown in red from the chassis as shown in **Figure 1**. **Note:** These fixings will not be reused.
- Loosely fix items **C** to the outside face only and items **D** inside each chassis extension using items **K** and items **M** as shown in the figures relevant to your chassis floor. **Note:** Items **C** can be used inside the chassis rail as a packer if required, and items **M** fitted over item **B** without the clamp plate for low floor models.
- Loosely fix items **B** to the inside face of each chassis extension with items **C** using items **M** and items **N**, in the correct position aiming to be 125-145mm from the lower internal edge of the rear panel as shown in **Figure 4**.
- Using **Figures 5 and 6** as a guide loosely fix item **A** to items **B** in the chosen position using items **J** and items **L**, aiming to be 435-455mm from Item **A**'s mounting point when on level ground.
- Using items **G** with items **L** and item **H** with items **L** fix item **E** to Item **A** to the position best suited to the vehicle, ensuring item **T2** is fitted at the lower mounting point.
- Using items **F** fix item **T1** and item **SP5** to item **E** then fully tighten all fixings ensuring the towbar is rigid, square and secure.





Notes:

1. For Torque settings see the column next to each item in the list.
2. Nose load limits and vehicle manufacturer's trailer / caravan weight limits must be observed.
3. We recommend the use of PRO-TOW Couplings with all our products.