



TOW-TRUST TOWBARS

Tow-Trust Towbars Technical Support
Email - technical@tow-trust.co.uk
Phone: 01827 717412 / WhatsApp: 07778 775135

In partnership with
ConWysAG

PRO-PARK-RT-1 Renault Traffic (2023 - 2025), Renault Master IV & Nissan Interstar III (XDD) 2024> Fitting Instructions

Part Number	PRO-PARK-RT-1	Document Number	TECPRO-PARK-RT-1	Issue Number	V1.2
Vehicle Make	Renault / Nissan	Vehicle Model	Traffic / Master / Interstar	Model Year	2023 > / 2024>

Contents

Item	Description	QTY	Item	Description	QTY	Item	Description	QTY
 CON-22500657CR	2 x Extension cables	2	 ASG-17027	Parking Sensor Carrier	2	 ASG-17028	Parking Sensor Bung	2
 DT-PRO-PARK	Drilling Template	1	 PRO-PARK-AN12	120* 4.8 Cable Tie Black	2	 PRO-PARK-AM10 PRO-PARK-AM10Y	100* 2.5 Cable Tie Black 100* 2.5 Cable Tie Yellow	6 6

Please note:

APRO-STEP is NOT included and must be ordered separately.

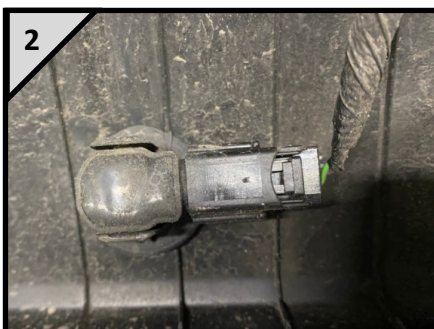
A 27mm Hole Cutter is NOT included.

1



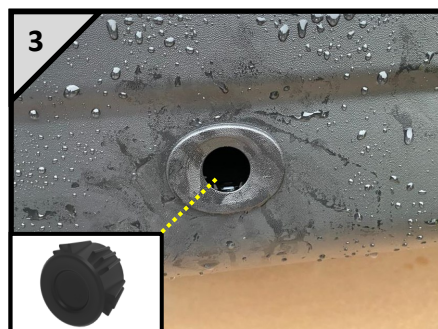
Renault Master / Nissan Interstar
Require the bumper to be removed
See APRO-TREN21 Fitting Instructions

2



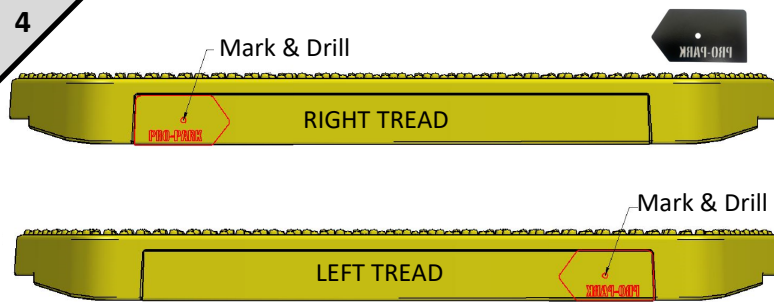
Remove the 2 OEM parking sensors
from the center of the rear bumper,
leaving the carriers in the bumper.

3



Insert the Parking sensor bungs into
the OEM carriers to blank off the
holes in place of the OEM Sensors.
The bungs push in from the outside.

4



Drill
Ø27mm
holes

Using the **DT-PRO-PARK** drilling template place the template onto each step tread as shown above. Carefully mark and cut one 27mm hole per tread for the carrier to fit into the tread. (Note: Please refer to the image above).





TOW-TRUST TOWBARS

Tow-Trust Towbars Technical Support

Email - technical@tow-trust.co.uk

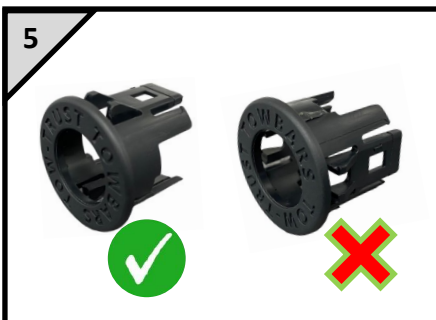
Phone: 01827 717412 / WhatsApp: 07778 775135

In partnership with
ConWysAG

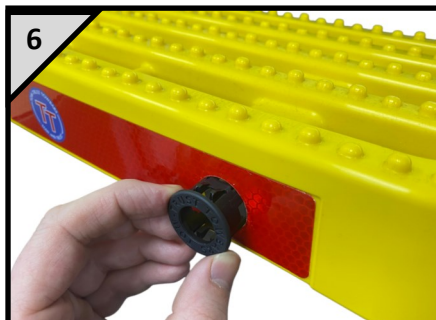
PRO-PARK-RT-1 Renault Traffic (2023 - 2025),

Renault Master IV & Nissan Interstar III (XDD) 2024> Fitting Instructions

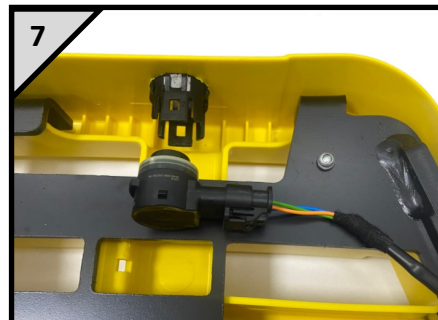
Part Number	PRO-PARK-RT-1	Document Number	TECPRO-PARK-RT-1	Issue Number	V1.2
Vehicle Make	Renault / Nissan	Vehicle Model	Traffic / Master / Interstar	Model Year	2023 > / 2024 >



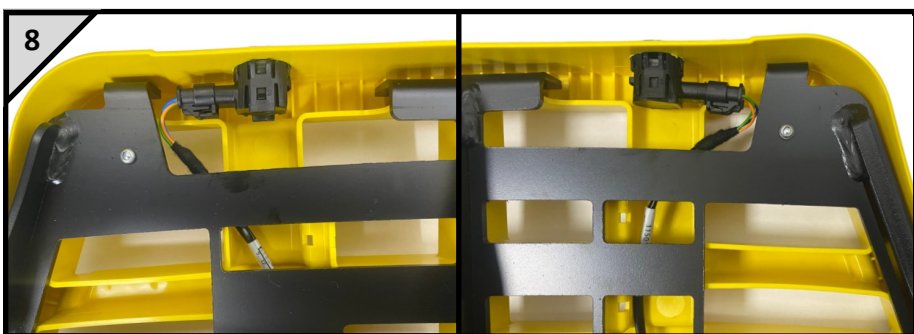
Ensure the carriers are the correct orientation before fitting them to the step.



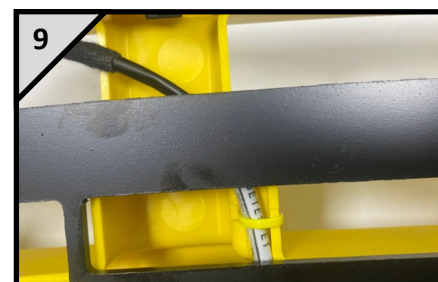
Insert the Tow-Trust carriers into the step treads pushing them in from the front.



Connect the extension cables to the OEM sensors.



Insert the OEM parking sensors into the parking sensor carriers ensuring the OEM sensors face outward in each tread and route the cables in the channels in the step.



PRO-PARK-AM10Y Shown

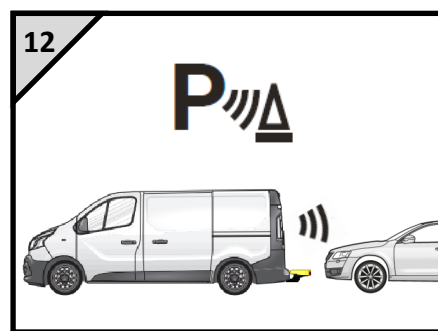
Secure the extension cables to the step using the appropriate 6 small cable ties.



Fit the PRO-STEP in accordance with the fitting instructions supplied with the PRO-STEP.



Connect the parking sensor cables to the original vehicle parking sensor connectors and use the larger cable ties to secure in place.



Once the sensors have been installed test the sensors to ensure they work correctly.

IMPORTANT

Please ensure the PRO-STEP (**not supplied**) is fitted as per the installation instructions and all bolts are torqued to the correct torque setting.

We are always here to support you!

Call: 01827 717412

Email: technical@tow-trust.co.uk

WhatsApp: 07778775135

