

## TREN21 Renault Master & Nissan Interstar, Panel Van & Platform Chassis (XDD) 2024> Single Rear Wheel, Front Wheel Drive, 830mm Wide Chassis, With & Without OEM Step.

Item	Qty	Description	Item	Qty	Description	Torque Setting
A	1	TREN21 Crossbar	F	2	M16 x 60 Bolts & Nyloc Nuts	215 Nm
B1	1	Left Hand Side Arm	G	14	M12 x 50 (10.9) Bolts, 14 S/P Washers & 4 Nyloc Nuts	130 Nm
B2	1	Right Hand Side Arm	H	2	M14 x 40 Bolts & Nyloc Nuts	150 Nm
C	2	Drop Arms	J	12	12 x 30 Flat Washers	
D	1	Spacer Plate	K	6	12 x 40 Flat Washers	
E	2	Towball Clamp Plates	L	2	14 x 27 Flat Washers	
			M	2	16 x 27 Flat Washers	

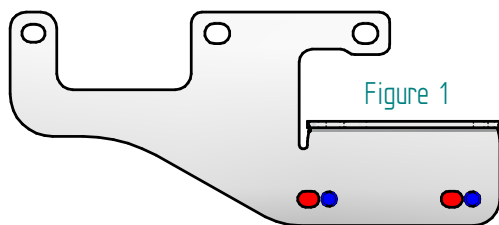
**Note:** When using this Towbar in conjunction with APRO-TREN21 and APRO-PARK-RT-1 refer to those fitting instructions ahead of beginning the installation.  
APRO-PARK-RT-1 will require the bumper removing to access the reversing sensors for removal.

### Preparation For Installation (OEM Step Models Only See Page 2)

1. Remove the four horizontal fixings securing the step's framework to the drop-down brackets as shown in **Figure 2** and discard.
2. Remove the two vertical fixings and one horizontal fixing from the nearside drop-down bracket and two vertical fixings from the offside drop-down brackets **Figure 3**, fully remove and discard as shown in **Figure 4**.
3. There are further images on this page showing the installation. **Note: The central removable OEM step panel remains in situ.**

### Towbar Installation For All Models (With & Without OEM Step) There are images on page 2 showing the installation alongside OEM step models.

1. Temporarily lower the spare wheel. **Note:** The tools required are located beneath the driver's seat.
  2. Loosely fix items **B1** and **B2** at the forwardmost mounting points only using items **G** and items **K**.
  3. Loosely fix items **B1**, **B2** with item **D** on the offside as a spacer, at the vertical mounting points using items **G** and items **J**.
  4. Loosely fix items **B1**, **B2** and items **C** at the remaining mounting points using items **G** with Items **K**.
- Note:** When this Towbar is installed in conjunction with APRO-TREN21 refer to the instructions supplied with that kit before proceeding any further.
5. Referring to the positions shown in **Figure 1** loosely fix item **A** to items **B1**, **B2** and items **C**, and the **OEM** step if applicable using items **G** and items **J**.
  6. Loosely fix items **E** to item **A** using items **H** and items **L** as shown in the diagram below. **Note:** When installing APRO-COUP items **E** will be always retained.
  7. Temporarily insert items **F** (Bolts Only) through item **A** and items **E** to ensure the mounting points are aligned and fully tighten all the fixings ensuring the **Towbar** and **OEM** step, if present are rigid, square and secure. Remove items **F** and raise the spare wheel back into position.
  8. Using items **F** and items **M** secure your desired ball bracket and wiring plate (**Not supplied in this kit**) to item **A** and fully tighten.



● With and Without OEM Step  
● With APRO-TREN21 Only

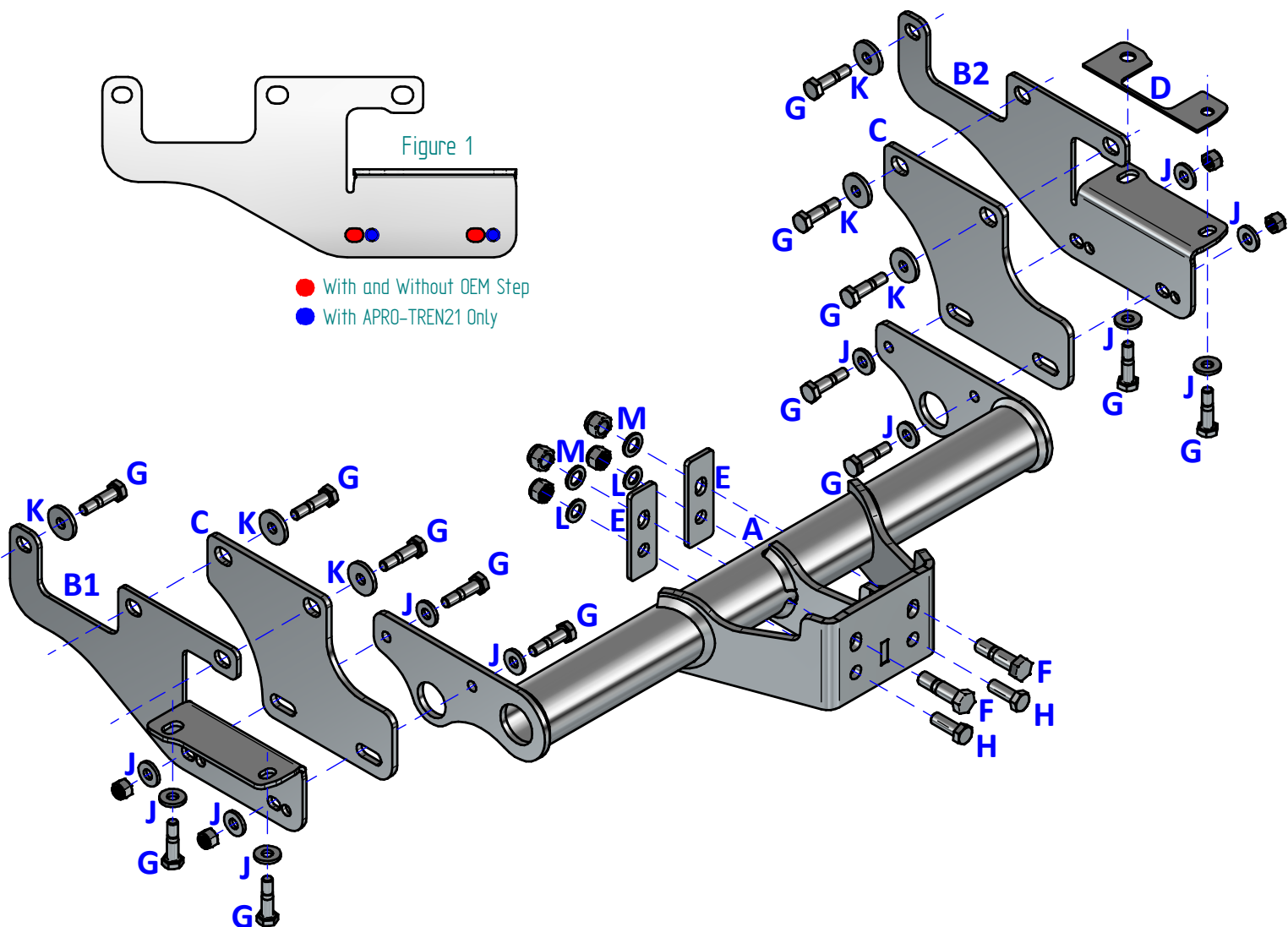


Figure 2

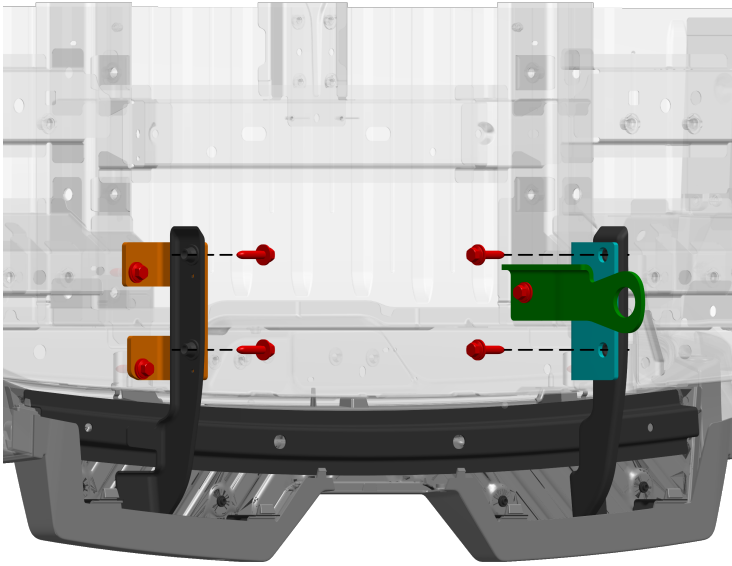


Figure 3

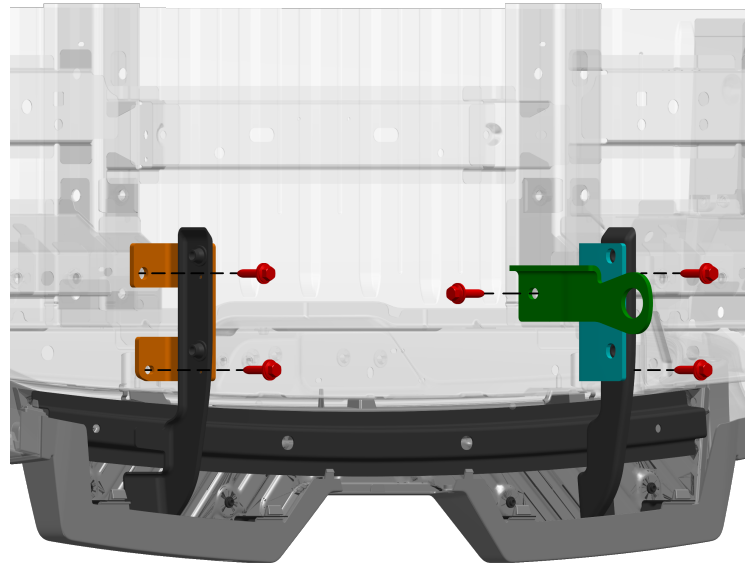


Figure 4

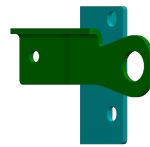
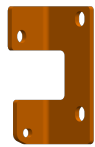


Figure 5

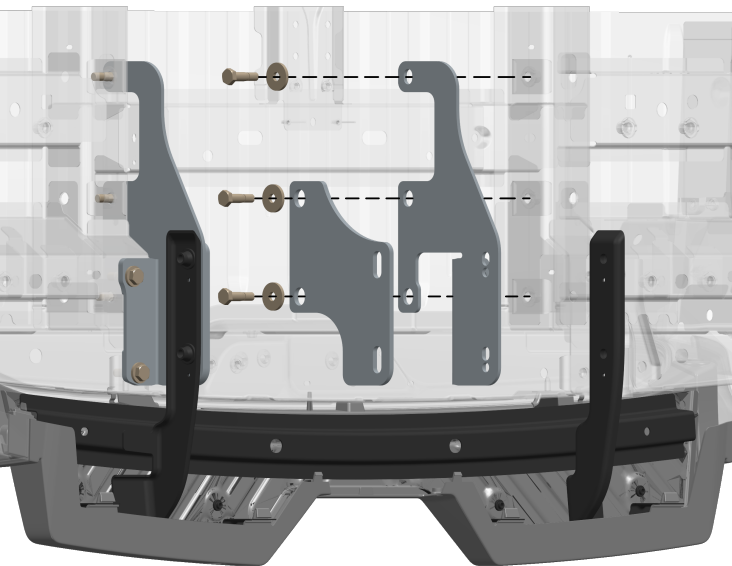
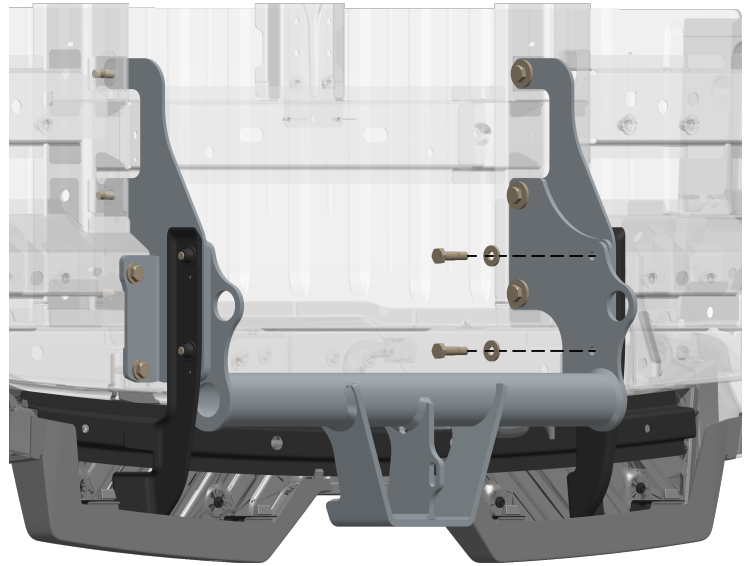


Figure 6



Notes:

1. For Torque settings see the column next to each item in the list.
2. Nose load limits and vehicle manufacturer's trailer / caravan weight limits must be observed.
3. We recommend the use of PRO-TOW Couplings with all our products.