

## TSY4H Ssangyong (KGM) Musso 2018>

Item	Qty	Description	Item	Qty	Description	Torque Setting
A	1	TSY4H Crossbar	F	2	19mm O/D 112mm Long Spacer Tubes	
A1	1	Slider Face Plate	G	2	M16 x 55 Bolts & Nyloc Nuts	215 Nm
A2	2	Slider Pin & Arms	H	6	M12 x 160 Bolts, 2 Nyloc Nuts & 4 S/P Washers	100 Nm
B1	1	Left Hand Side Arm	J	8	M14 x 45 Bolts & Nyloc Nuts	150 Nm
B2	1	Right Hand Side Arm	K	4	12 X 30 Belleville Spring Washers	
C	1	Right Hand Upper Chassis Bracket	L	8	12 x 40 Flat Washers	
D	1	Left Hand Clamp Plate	M	16	14 x 27 Flat Washers	
E	2	Chassis Spacer Tube Inserts				

### Bumper Removal:

1. Unplug the bumper wiring looms, (one on the offside, on the chassis rail and one on the nearside).
2. Remove the three fixings securing the wheel arch liner and mudguards.
3. Remove the two push-in clips from the lower outer edge of the bumper from each side.
4. Pull back the wheel arch liner and remove the tip screw from each side.
5. Remove the two fixings from the pair of vertical bumper mounts as shown in **Figure 1**.
6. Pull the bumper out sideways and rearwards carefully unclipping the bumper from the body.

### Towbar Installation:

1. Lower the exhaust by removing the rearmost exhaust rubber from the upper two prongs as shown in **Figure 2**, plus the rubbers holding the centre silencer to allow clearance for drilling the chassis for installing item **B2** and item **F**.
2. Using **Figure 2** as a guide open out the forwardmost mounting point on the lower face only of each chassis rail to **20mm O/D**.
3. Negotiate item **C** into position, temporarily hanging on top of the chassis rail. **Note: No fixings are used at this stage.**
4. Return the exhaust roughly to its original position making sure not to rehang the exhaust rubbers at this stage.
5. Using **Figure 2** as a guide loosely fix item **B1** and item **B2** with items **F** using Items **H** and items **L** to the chassis at the forwardmost mounting points.
6. Using **Figure 2** as a guide insert items **E** into the chassis and line up with the rear mounting points.
7. Loosely fix item **B1** with item **D** to the nearside chassis rail using items **H** with items **K** and **L** ensuring item **L** is in contact with the side arm.
8. Loosely fix item **B2** and item **C** to the offside chassis rail using items **H** with items **K** and **L** ensuring item **L** is in contact with the side arm.
9. Loosely fix item **B2** to item **C** using items **J** with items **M**.
10. Remount the bumper and it's fixings, reconnect the wiring looms and rehang the exhaust.
11. Loosely fix item **A** to item **B1** and item **B2** using items **J** with items **M**.
12. Fix item **A1** to item **A** using **A2**.
13. Using items **G** secure your desired ball bracket (not supplied in this kit) to item **A1**.
14. Fully tighten all the fixings ensuring the Towbar is centralised, rigid, square and secure.

Figure 1

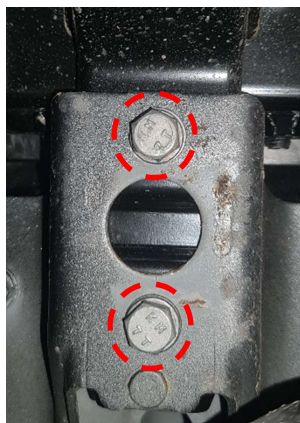
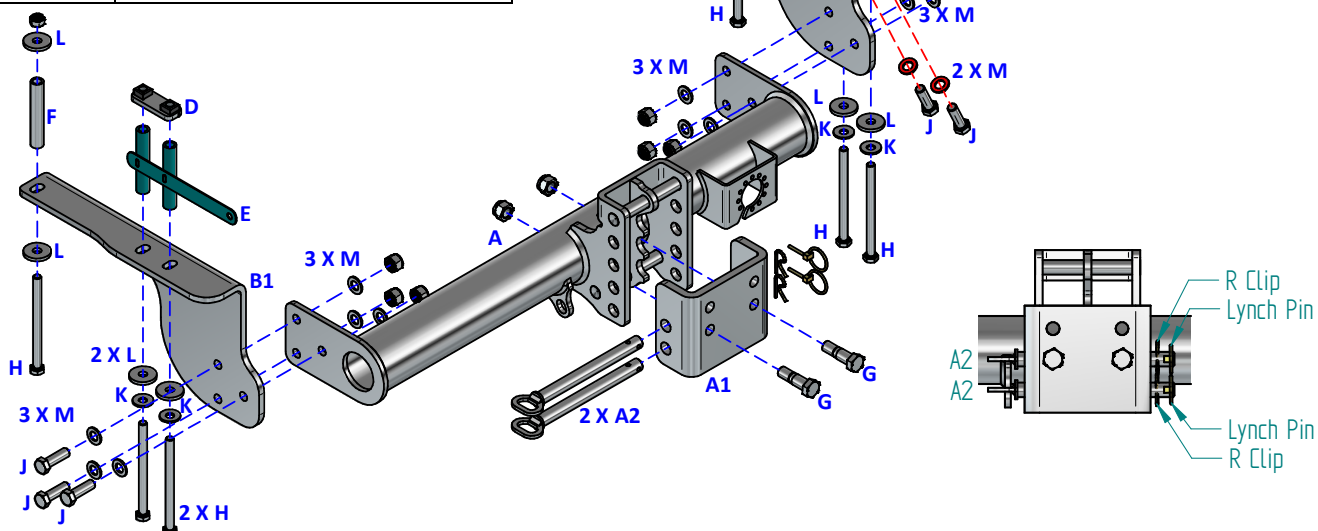
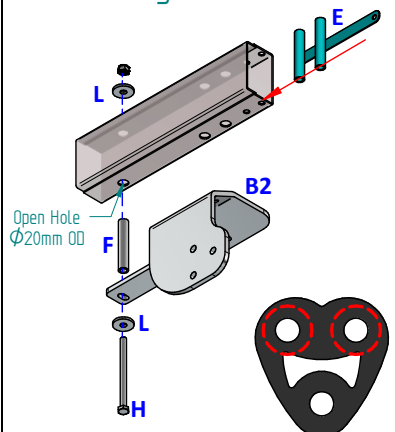


Figure 2



### Notes:

1. For Torque settings see the column next to each item in the list.
2. Nose load limits and vehicle manufacturer's trailer / caravan weight limits must be observed.
3. We recommend the use of PRO-TOW Couplings with all our products.