

TKIA5AVK Kia Sorento Mk6 2020> & Hyundai Santa Fe (TMA) 2021>

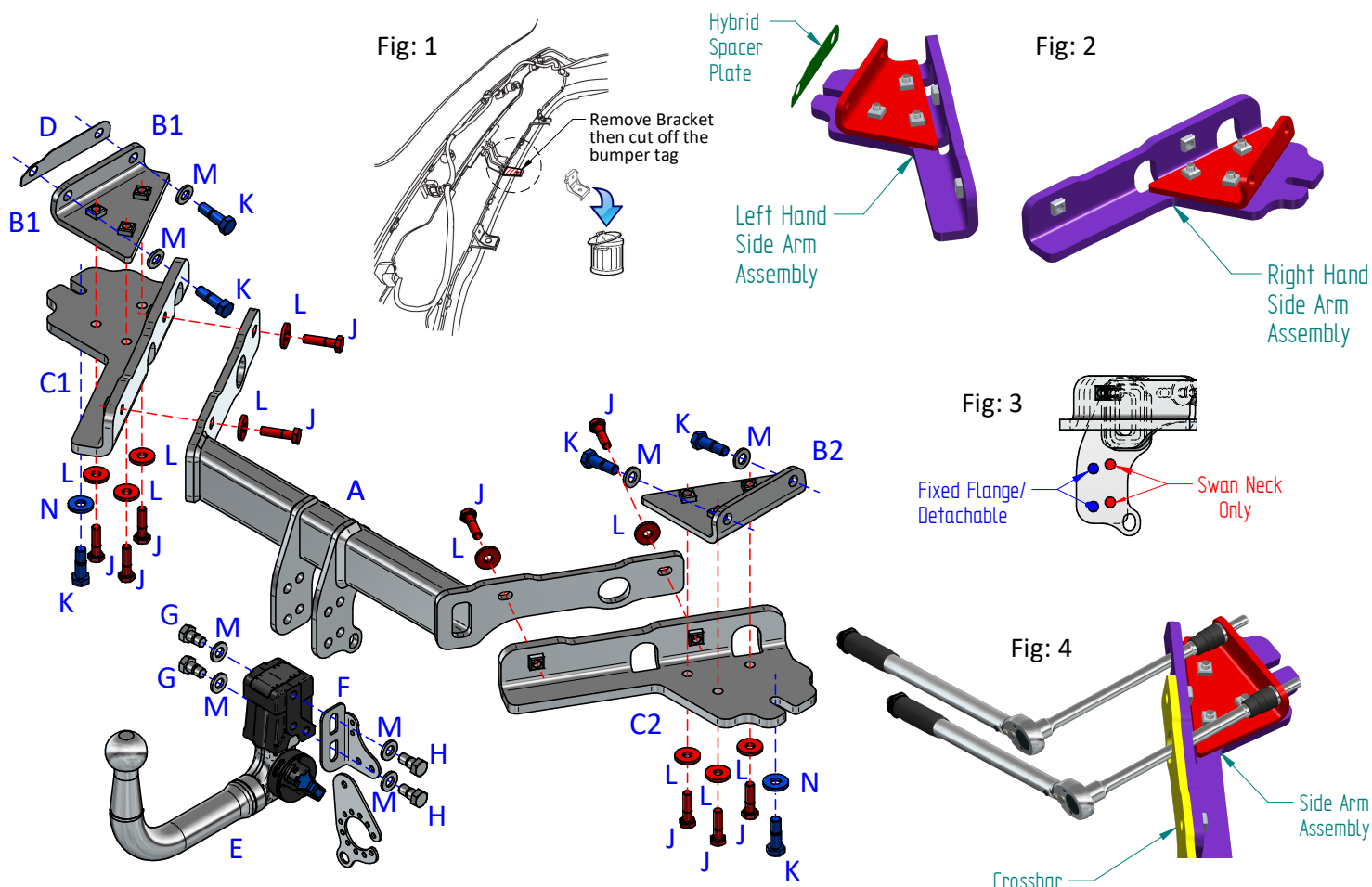
Item	Qty	Description	Item	Qty	Description
A	1	TKIA5A Crossbar	F	1	ATTFPU Universal Flip Up Socket Plate
B1	1	Left Hand Upper Side Arm Bracket	G	2	M12 x 22 Bolts & S/P Washers
B2	1	Right Hand Upper Side Arm Bracket	H	2	M12 x 25 Bolts & S/P Washers
C1	1	Left Hand Lower Side Arm	J	10	M10 x 40 Bolts (10.9) & S/P Washers
C2	1	Right Hand Lower Side Arm	K	6	M12 x 40 x 1.25 Bolts & S/P Washers
D	1	Spacer Plate (Hybrid Only)	L	10	10 x 30 Flat Washers
E	1	6#09 Detachable Neck	M	8	12 x 25 Flat Washers
			N	2	12 x 30 Flat Washers

Preparation For Installation

1. Lower the spare wheel.
2. Remove the central bumper tag from the rear impact beam and discard. Then cut the tag off the bumper. (Fig:1)
3. Lower and support the AdBlue tank.
4. Lower and support the exhaust silencer. **Note:** The rearmost rubber must be removed from the silencer and not the vehicle.
5. 2024> Santa Fe may require a non-visible bumper cut.

Towbar Installation.

1. Using Items J with Items L fit Item B1 to Item C1 and Item B2 to Item C2 creating side arm assemblies. (Fig:2)
2. Loosely fit Item K with Item N a couple of turns into each chassis vertical mounting point this will be used to slide the side arm on and support.
3. Using Items K with Items M loosely fit the side arm assemblies to each chassis member. (Fig:4) **Hybrid Models:** Item D must be fitted. (Fig:2)
4. Fix Item A to the side arm assemblies using Items J with Items L.
5. Fix Item E and Item F to Item A using Items G with Items M and Items H with Items M to the correct position (Fig:3)
6. Fully tighten all fixings ensuring the Towbar is rigid, square and secure. (Fig:4)
7. Raise the spare wheel.



Notes:

1. For Torque settings see general notes overleaf.
2. Nose load limits and vehicle manufacturer's trailer / caravan weight limits must be observed.