

**TAUT9 Auto-Trail (Ford Based) Drop Down Floor Range Motorhomes 2024>  
& Ford Based Internally Mounted Chassis Extensions With 145mm Hole Centres 814-834mm Internally Mounted 2006>**

Item	Qty	Description	Item	Qty	Description
A	1	TAUT9 Crossbar	H	2	M16 x 50 Bolts & Nyloc Nuts
B	2	Side Arms	J	2	M12 x 40 Bolts & Nyloc Nuts
C	2	Clamp Plates	K	1	M12 x 120 Bolt (10.9) & Nyloc Nut
D	2	Spacer Plates	L	8	M12 x 45 Bolts & Nyloc Nuts
F	1	Extension	N	20	12 x 25 Flat Washers
S	1	ASP5			
T	1	ATT—T1	T1	1	30 mm O/D 60 mm Long Spacer Tube

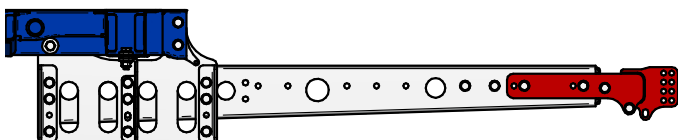
**Notes:-**

- This Towbar can also be installed on Ford Chassis Extensions mounted to the inside face of the chassis using the 145mm mounting points.
- Page 1** is for Auto-Trail Drop Down Floor models with **OEM** extensions. **Figures 1, 2 & 3** Show the correct settings for mounting this Towbar.
- Page 2** is for Ford Based Internally Mounted Chassis Extensions with 145mm hole centres.

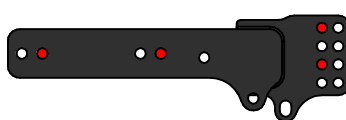
**Auto-Trail Towbar Installation:-**

- Using **Figure 1** identify the correct position to mount the Towbar.
- Using **Figure 2** loosely fix items **B** to the outside face of each chassis extension using items **L** with items **N** with items **C** on the inside face of the chassis extensions.
- Using items **L** with items **N** loosely fix item **A** to items **B** with items **D** in between as required.
- Using items **J** with items **N** and item **K** with items **N** fix item **F** to item **A** to the position shown in **Figure 2**, ensuring item **T1** is fitted at the lower point.
- Using item **H** fix item **S** and **T** to item **F** to the position shown in **Figure 3** then fully tighten all fixings ensuring the Towbar is rigid, square, and secure.

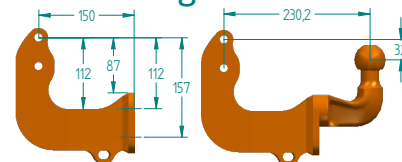
**Figure 1**



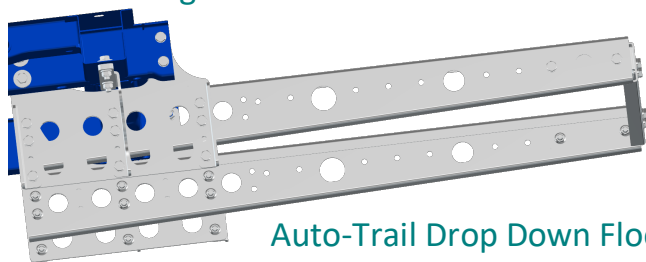
**Figure 2**



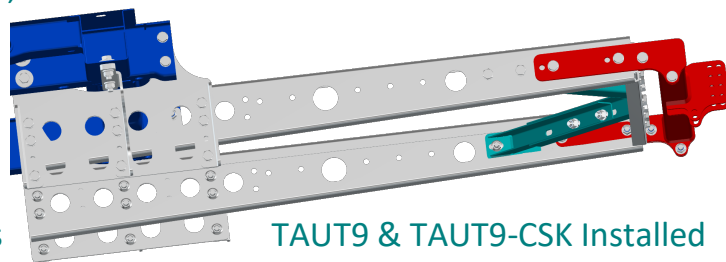
**Figure 3**



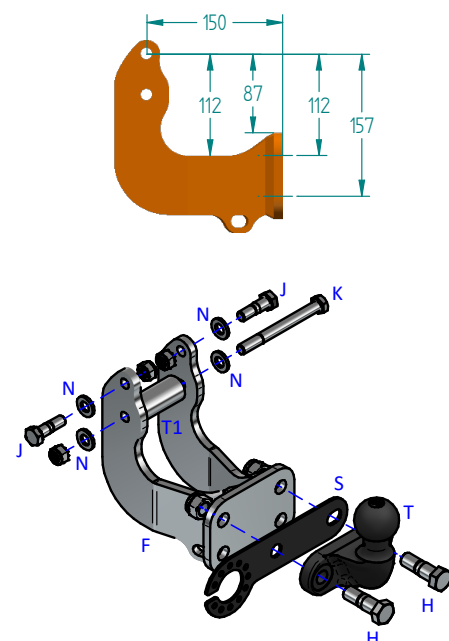
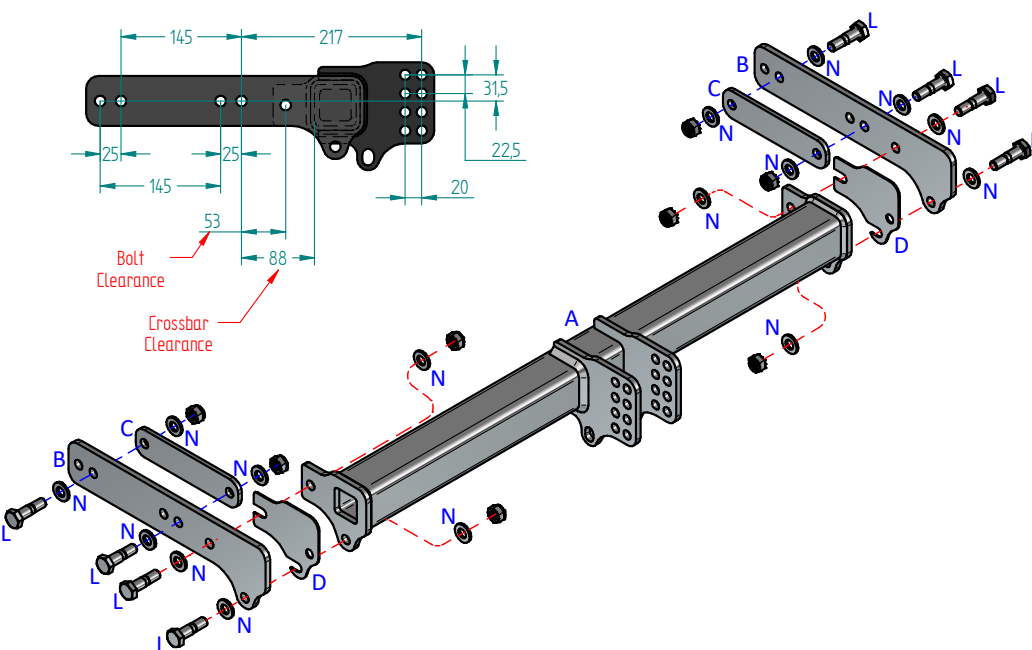
**When Fitting To Models With OEM Chassis Extensions, Order TAUT9-CSK In Addition For Full Installation**



**Auto-Trail Drop Down Floor Models**



**TAUT9 & TAUT9-CSK Installed**



**Notes:**

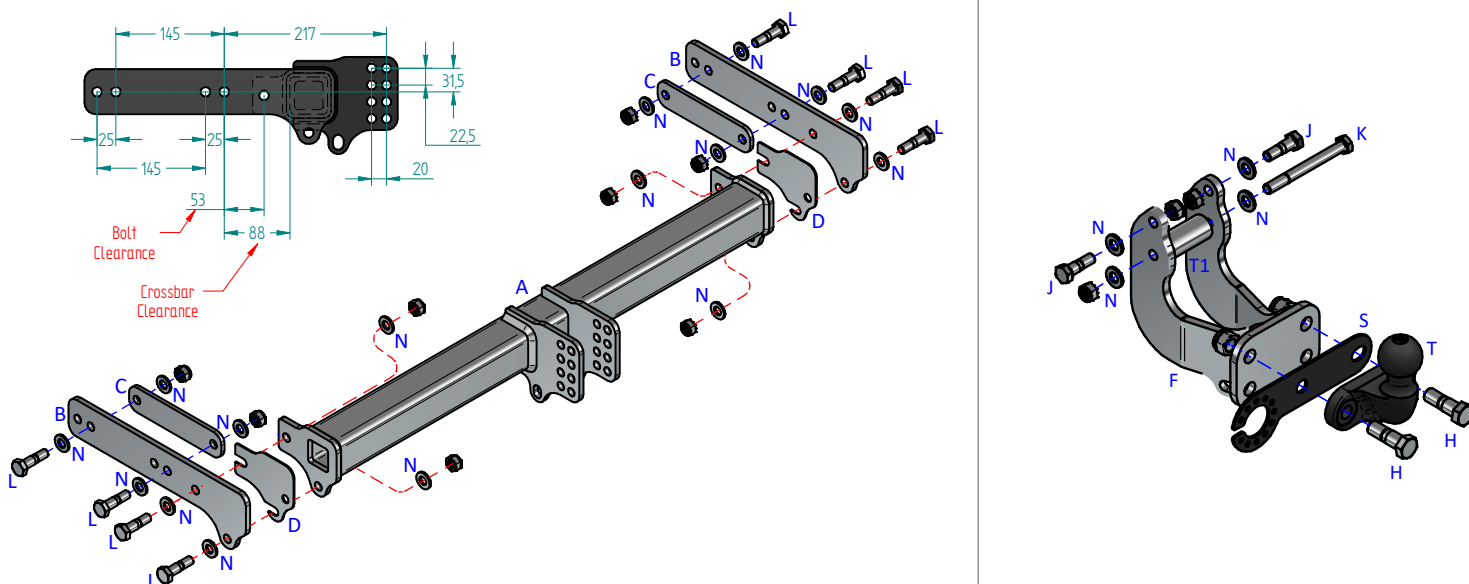
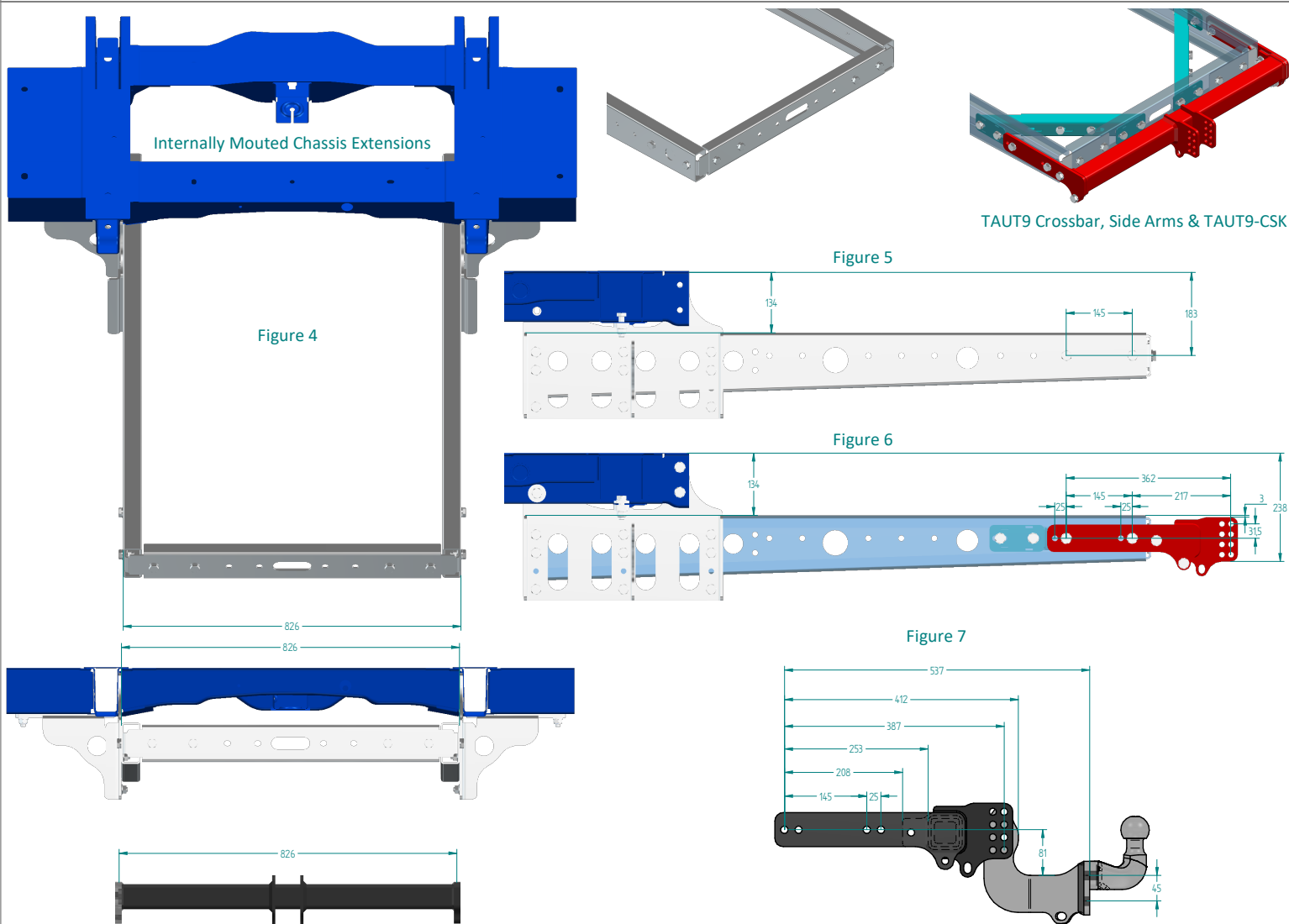
- For Torque settings see general notes overleaf.
- Nose load limits and vehicle manufacturer's trailer / caravan weight limits must be observed.
- We recommend the use of PRO-TOW Couplings with all our products.

## Notes:-

1. This Page contains images and instructions only for mounting this Towbar to Ford Based Motorhomes with Chassis Extensions.
2. It is important that any Chassis Extensions fitted are check for suitability for towing and that there is a towing capacity before installation.
3. It is important that all dimensions are checked for suitability before purchase and fitment.
4. Some Chassis Extensions may require addition components before they become compatible with towing for example using **ATT-CHASS-CRS**.
5. **Figure 4** shows the chassis width and position the Towbar can be used with.

## Towbar Installation:

1. Using **Figures 5, 6 & 7** identify the correct position to mount the Towbar.
2. Using **Figure 6** loosely fix items **B** to the outside face of each chassis extension using items **L** with items **N** with items **C** on the inside face of the chassis extensions.
3. Using items **L** with items **N** loosely fix item **A** to items **B** with items **D** in between as required.
4. Using items **J** with items **N** and item **K** with items **N** fix item **F** to item **A** to the position best suited to the vehicle, ensuring item **T1** is fitted at the lower point.
5. Using item **H** fix item **S** and **T** to item **F** to the position best suited to the vehicle, then fully tighten all fixings ensuring the Towbar is rigid, square, and secure.



## Notes:

1. For Torque settings see general notes overleaf.
2. Nose load limits and vehicle manufacturer's trailer / caravan weight limits must be observed.
3. We recommend the use of PRO-TOW Couplings with all our products