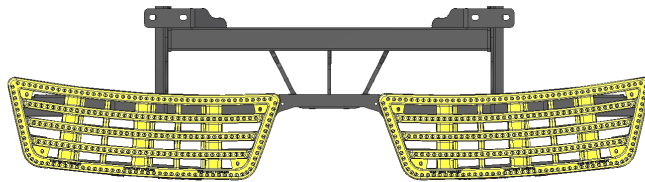
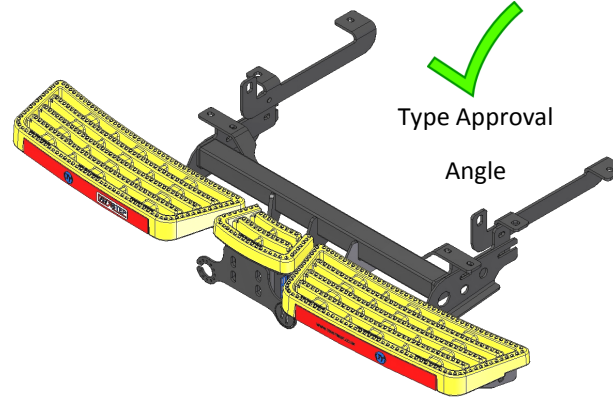


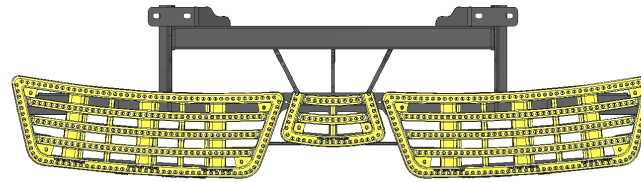
Type Approval
Angle



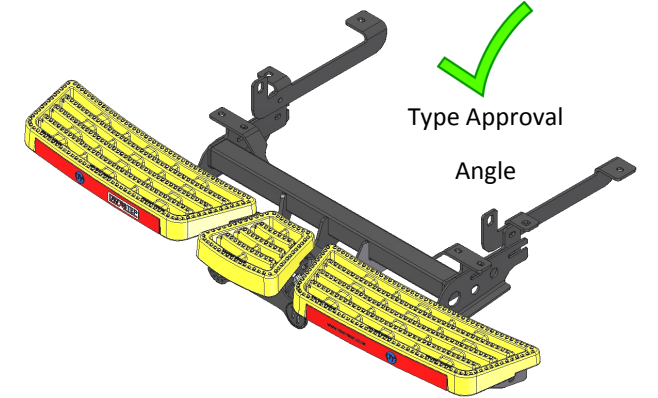
Standard Towbar And PRO-STEP ONLY



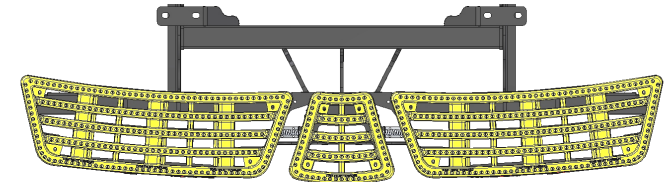
Type Approval
Angle



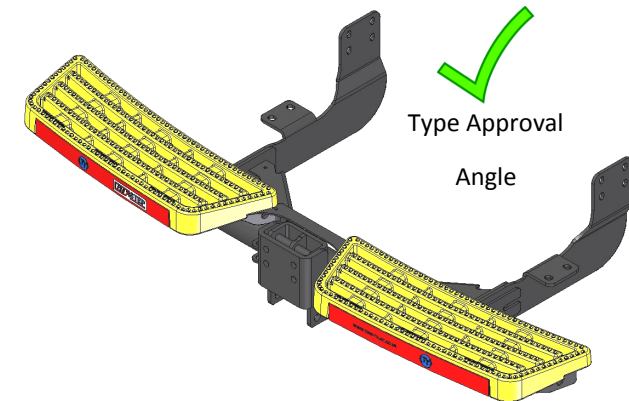
Standard Towbar, PRO-STEP & PRO-COUP



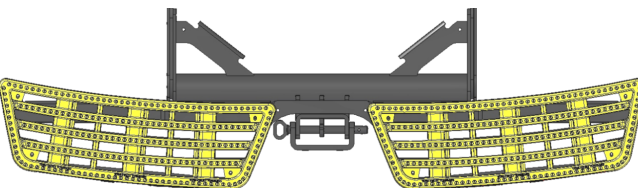
Type Approval
Angle



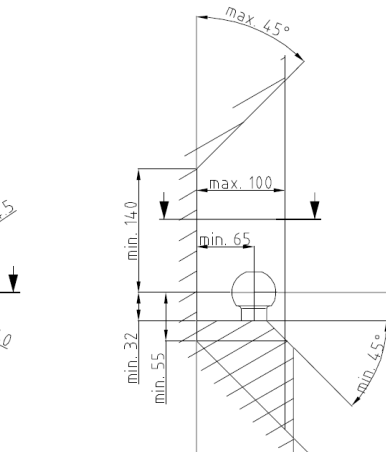
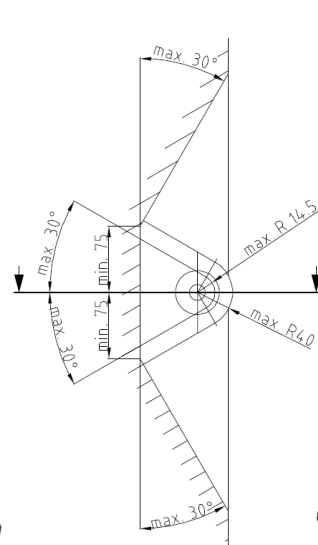
Standard Towbar, PRO-STEP & PRO-COUP-R



Type Approval
Angle

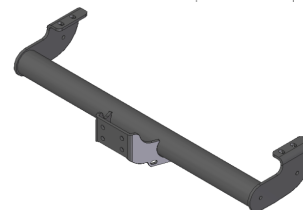


Adjustable Height Towbar And PRO-STEP ONLY

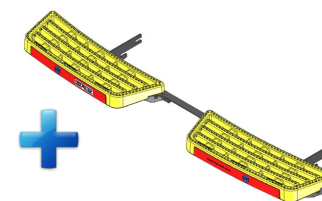


Type Approval Clearance Angles

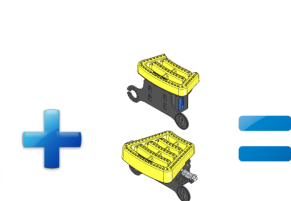
The clearance specified in appendix
VII, diagram 25a/b of Regulation No.
55.01 UN EU at
laden weight of the vehicle.



Tow-Trust Towbar



Double PRO-STEP



PRO-COUP or
PRO-COUP-R



Type Approval