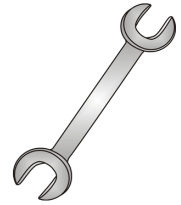




PRO STEP™

Fitting Instruction



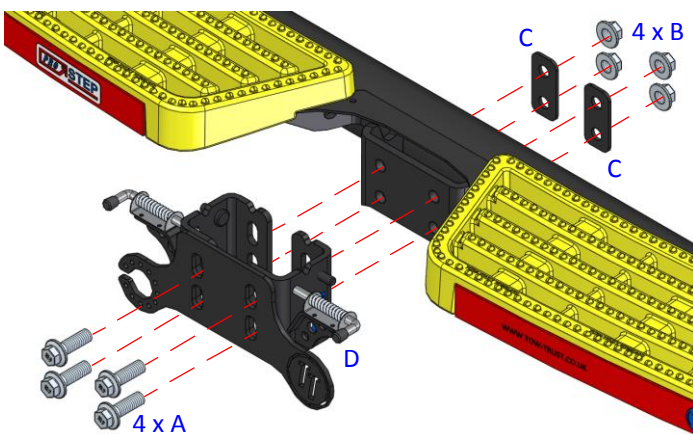
Issue 2

PRO COUP-F

Item	Qty	Description
A	6	M16 x 50 Flange Lock Bolts (10.9)
B	6	M16 Flange Lock Nuts (10.9)
C	2	Clamp Plates
D	1	Pro Coupling-F

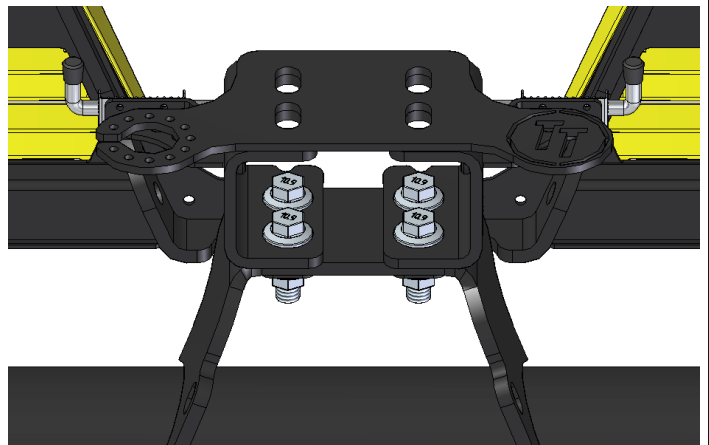
1. Using Item **A** with Item **B** and Item **C** fix Item **D** to the Towbar Face plate ensuring the Towbar is sandwiched between Item **D** and Item **C** (as seen in section 3).
2. Always ensure the top tread is level with the outer treads and torque Item **D** to 252Nm.
3. Using Item **A** with Item **B** bolt your desired ball bracket to Item **D** and torque to 252Nm. (Tow-Trust Towbars Advise you either use a BRADLEY V352L (with ball) or V354L (without ball) Towing Jaw).
4. **All Six Heavy Duty M16 Lock Fixings Must Be Used To Fit This Product.**

1



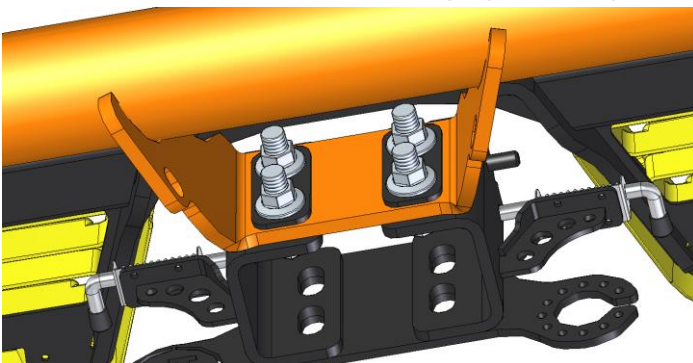
4x M16 x 50 FLANGE LOCK BOLTS MUST BE USED

2



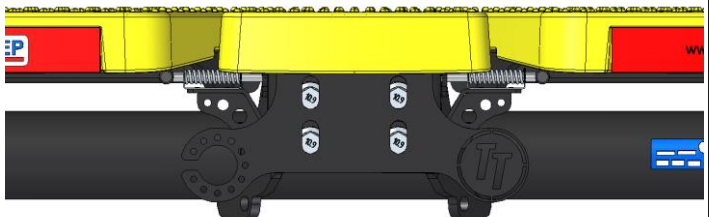
3

Towbar Highlighted Orange



Always ensure Towbar is sandwiched between PRO-COUPLING and clamp plates

4



Always ensure central tread is level with the outer treads. Using the remaining fixings bolt your desired ball bracket to the face plate and torque all fixings to 252 Nm

Note:

1. Nose load limits and vehicle manufacturers trailer / caravan weight limits must be observed.