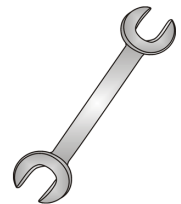




# Tow-Trust Towbars

Important: Please read General Notes overleaf before fitting

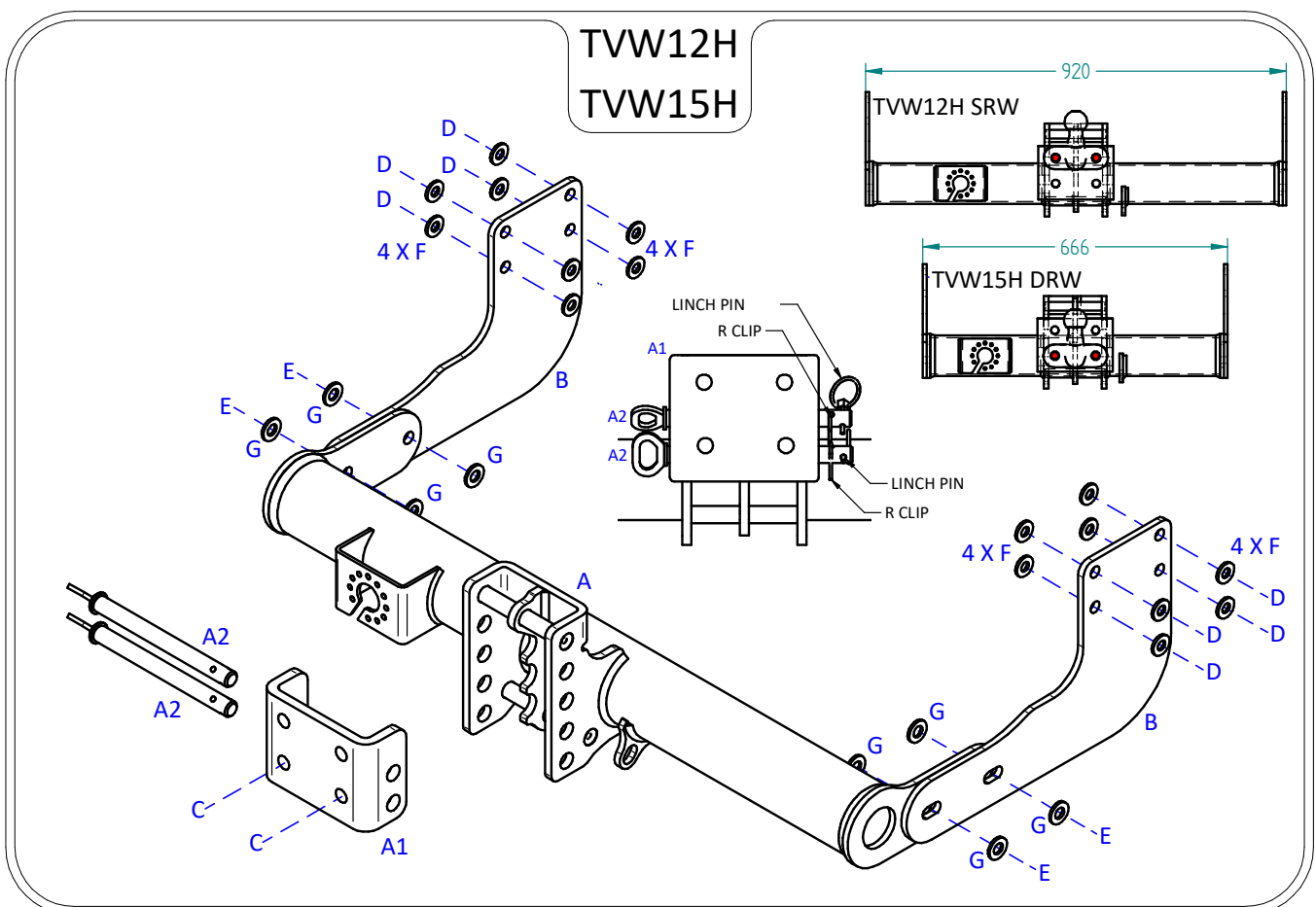


Issue 4

## TVW12H MAN TGE / VOLKSWAGEN CRAFTER VAN SRW 2017> (Without Step)

Item	Qty	Description	Item	Qty	Description
A	1	TVW12H Crossmember	C	2	M16 x 55 Bolts & Nyloc Nuts
A1	1	Slider Face Plate	D	8	M12 x 120 Bolts & Nyloc Nuts
A2	2	Slider Pins & Clips	E	4	M14 x 40 Bolts & Nyloc Nuts
B	2	Side Arms	F	16	12 x 25 Flat Washers
			G	8	14 x 27 Flat Washers

1. If fitted remove the towing eye from the O/S chassis member (This is not refitted with the Towbar assembly).
2. Locate Towbar mounting points and ensure the chassis members are free from any under seal around all Towbar mating faces.
3. Using Item D with Item F fix Items B to the inside face of each chassis member.
4. Using Item E with Item G fix Item A to Items B.
5. Using Item C fix you desired ball bracket and wiring plate (Not supplied in this kit) to Item A1.
6. Fully tighten all fixings ensuring the Towbar is rigid, square and secure.



### Note:

1. Recommended Torque Setting for M12 Grade 10.9 -130 Nm. (For other Torque Settings see notes overleaf.)
2. Nose load limits and vehicle manufacturers trailer / caravan weight limits must be observed.