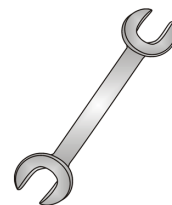




Tow-Trust Towbars

Important: Please read General Notes overleaf before fitting



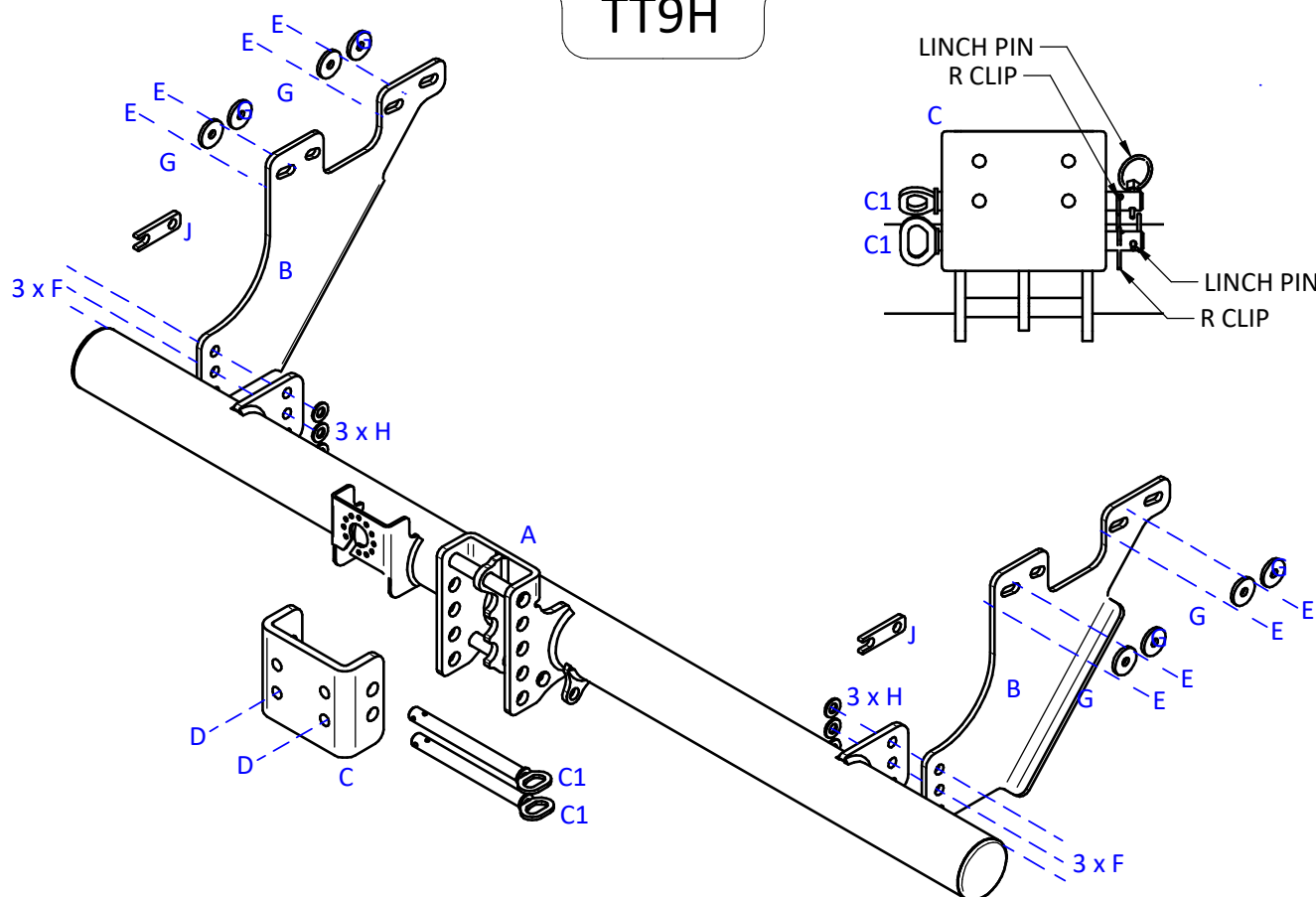
Issue 6

TT9H TOYOTA HI LUX & VIGO PICK UP 4WD 2005>

Item	Qty	Description	Item	Qty	Description
A	1	Crossmember	D	2	M16 x 55 Bolts & Nyloc Nuts
B	2	Handed Side Arms	D1	2	M16 x 50 Bolts
C	1	Slider Face Plate	E	8	M12 x 40 x 1.25 Bolts (10.9) & S/P Washers
C1	2	Slider Pins & Clips	F	6	M14 x 40 Bolts & Nyloc Nuts
			G	8	12 x 40 Flat Washers
			H	6	14 x 27 Flat Washers
			J	2	Bumper Spacers
			K	2	88.9mm O/D Black End Caps (RTi1164)

1. Remove the rear bumper.
2. Using Item E with Item G bolt Items B to each chassis member.
3. Using Item F with Item H bolt Item A between Items B.
4. Using Item D bolt the ball bracket (not supplied in this kit) to the mounting plate (Item C).
(NOTE: When fitting Part No. V352L Use D1)
5. Fully tighten all nuts and bolts and ensure the Towbar is rigid, square and secure.

TT9H



Note:

1. Recommended Torque Setting for M12 Grade 10.9 -130 Nm. (For other Torque Settings see notes overleaf.)
2. Nose load limits and vehicle manufacturers trailer / caravan weight limits must be observed.