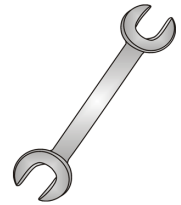




Tow-Trust Towbars

Important: Please read General Notes overleaf before fitting

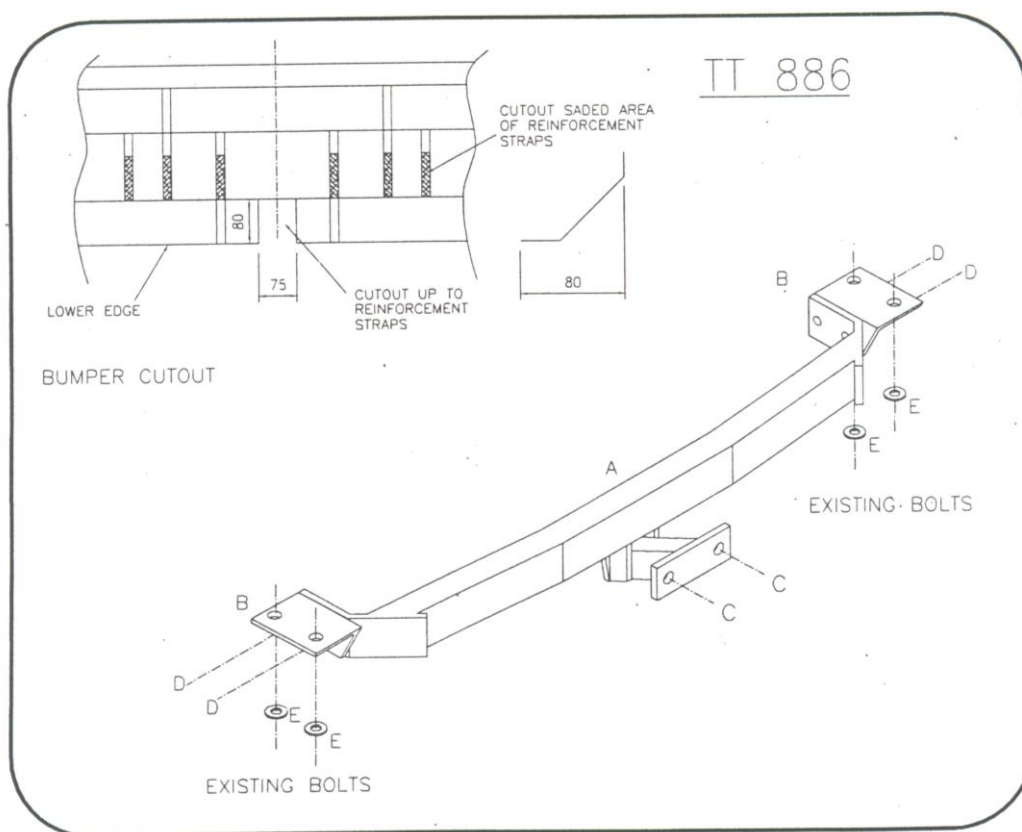


Issue 3

TT886 Toyota Avensis Saloon / Hatchback 1998 - 2003

Item	Qty	Description	Item	Qty	Description
A	1	Towbar	C	2	M16 X 50 Bolts, Nuts & S/P Washers
B	2	Handed Side Arms	D	4	M12 x 35 Bolts, Nuts & S/P Washers
			E	4	14 x 27 Flat Washers

1. Remove the rear bumper (4 nuts behind the rear panel inside the boot, tip screw, 3 screws securing the mud flaps, 4 screws along the top edge and 4 push in clips along the bottom edge).
2. Remove the reinforcement straps and cut the bumper (see sketch).
3. Remove the towing eyes from the ends of each chassis member and retain the bolts.
4. Using the original towing eye bolts and item E, loosely bolt item B to each chassis member.
5. Using item D bolt item A to item B.
6. Fully tighten all nuts and bolts and ensure the towbar is rigid and secure.
7. Re-fit the bumper.
8. Using item C bolt the ball bracket and wiring plate (not supplied in this kit) to the mounting plate.



Note: nose load limits and vehicle manufacturers trailer / caravan weight limits must be observed.