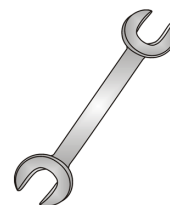




Tow-Trust Towbars

Important: Please read General Notes overleaf before fitting



Issue 5

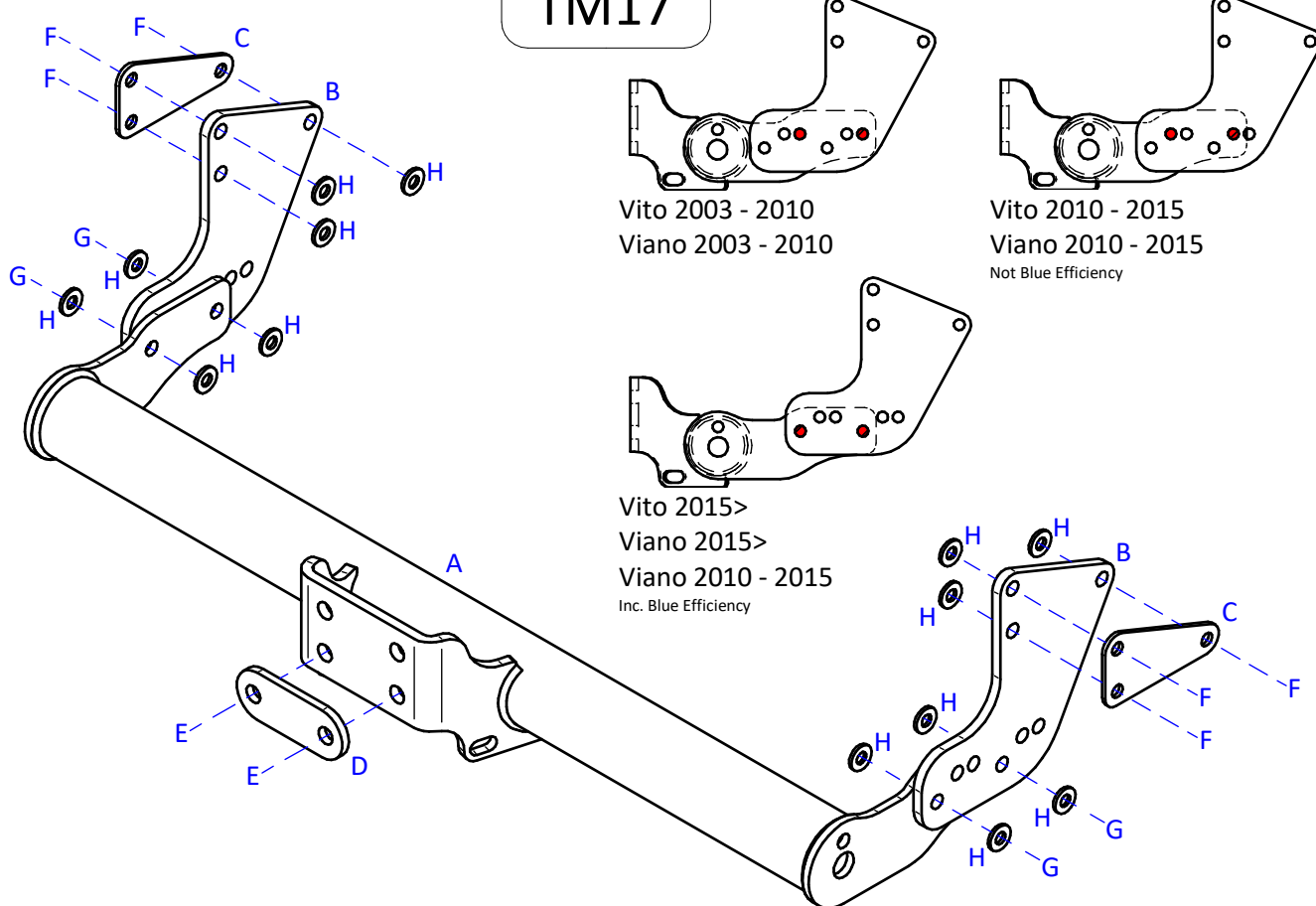
TM17 MERCEDES VITO / VIANO / V CLASS (W639 / W447)

Item	Qty	Description	Item	Qty	Description
A	1	TM17 Crossmember	E	2	M16 x 60 Bolts & Nyloc Nuts
B	2	Side Arms	F	6	M12 x 100 Bolts & Nyloc Nuts
C	2	Clamp Plates	G	4	M12 x 40 Bolts & Nyloc Nuts
D	1	Coupling Spacer	H	14	12 x 25 Flat Washers
			J	4	M12 Black Bolt Caps

TOWBAR INSTALLATION:

1. Remove the towing eye from the O/S chassis member.
2. Using Item F with Item C and Item H fix Items B to the inside face of each chassis member ensuring Item C is fitted as a clamp plate on the outside face.
3. Using Item G with item H fix Item A between each side arm.
4. Using Item E fix your desired ball bracket and wiring plate (not supplied in this kit) to Item A. Use Item D as a spacer plate when fitting the ball bracket to the lower setting and as a clamp plate when fitting to the upper setting.
5. Fully tighten all fixings ensuring the Towbar is rigid, square and secure.

TM17



Note:

1. Recommended Torque Setting for M12 Grade 10.9 -130 Nm. (For other Torque Settings see notes overleaf.)
2. Nose load limits and vehicle manufacturers trailer / caravan weight limits must be observed.