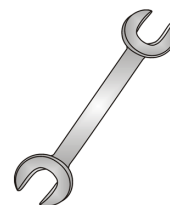




# Tow-Trust Towbars

Important: Please read General Notes overleaf before fitting



Issue 3

## TJAG4 JAGUAR XE 2015> XF (260) 2015> XF SPORTBRAKE (260) 2017>

| Item | Qty | Description           |
|------|-----|-----------------------|
| A    | 1   | TJAG4 Crossmember     |
| B    | 1   | Extension             |
| X    | 2   | Original Torx Fixings |

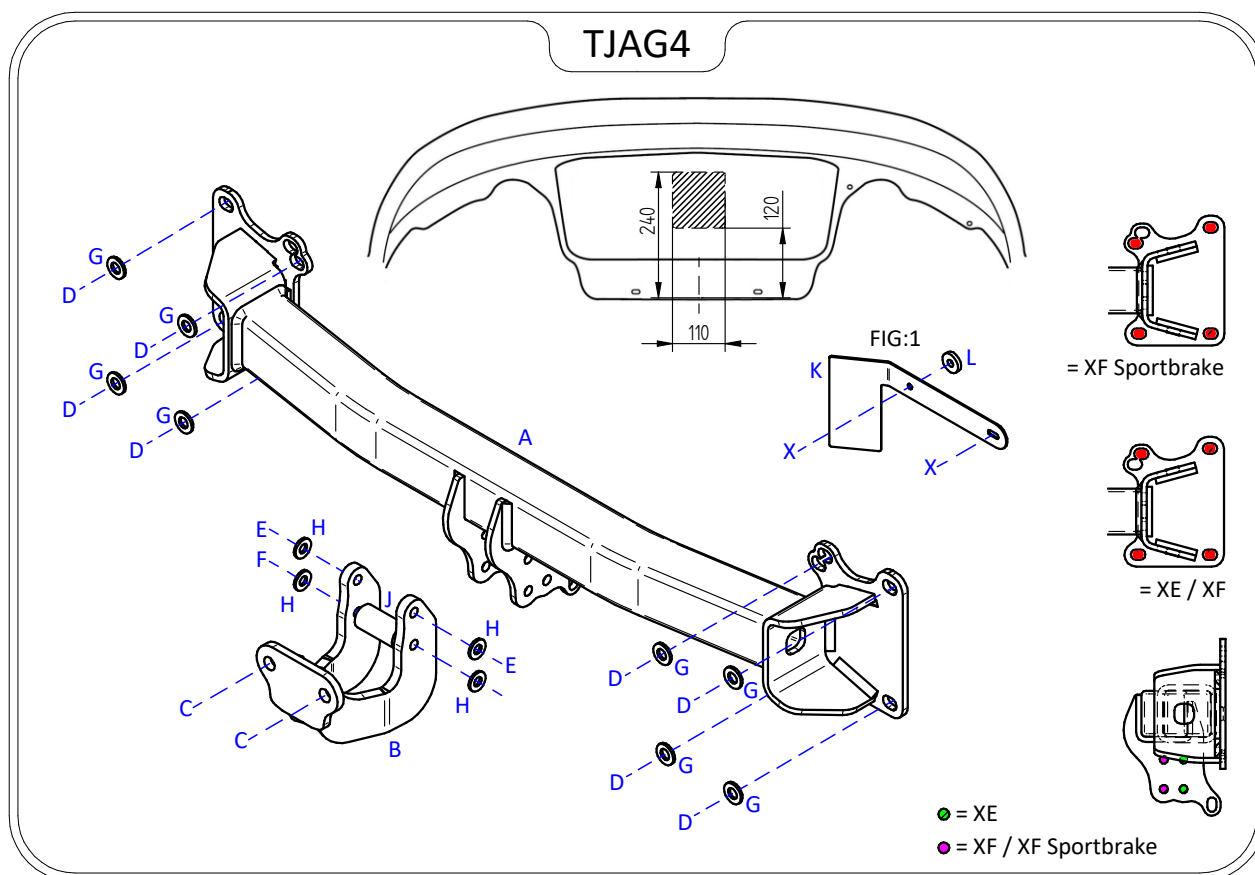
| Item | Qty | Description                        |
|------|-----|------------------------------------|
| C    | 2   | M16 x 50 Bolts & Nyloc Nuts        |
| D    | 8   | M14 x 40 Bolts & S/P Washers       |
| E    | 2   | M12 x 45 Bolts & Nyloc Nuts        |
| F    | 1   | M12 x 130 Bolt (10.9) & Nyloc Nut  |
| G    | 8   | 14 x 27 Flat Washers               |
| H    | 4   | 12 x 25 Flat Washers               |
| J    | 1   | 30mm O/D x 60mm Long Spacer Tube   |
| K    | 1   | O/S Only Blind Spot Sensor Bracket |
| L    | 1   | 8 x 25 H/D Flat Washer             |

### BUMPER REMOVAL:

1. Remove the rear bumper, four fixings along the lower edge, two wheel arch fixings either side, peel back wheel arch liner to reveal one more fixing either side. Remove side covers from each light cluster and remove exposed fixing.
2. Remove the rear impact beam (This is NOT refitted with the Towbar assembly). Sportbrake only: you will need to unclip upper bumper support to access top mounting points of rear beam.

### TOWBAR INSTALLATION:

1. Using Item D with item G fit Item A to the rear panel.
2. Fully tighten all fixings ensuring the Towbar is rigid, square and secure.
3. Cut the rear bumper as per the sketch below and refit.
4. Fit Item B to Item A using Item E with Item H and Item F with item H ensuring Item J is fitted between the lower mounting point.
5. Using Item C fit your desired ball bracket and wiring plate (Not supplied in this kit) to Item B.
6. Fully tighten all remaining fixings ensuring the Towbar is rigid, square and secure.
7. **R-Dynamic vehicles fitted with Blind Spot Sensors to each rear external quarter only:** using FIG.1 remove two fixings from the sensor, slide Item K between sensor and car body and loosely fix in place with the original fixing at the forwardmost point only, then insert Item L between the car body and Item K and fix in place with the original fixing, fully tighten.



### Note:

1. Torque Settings see notes overleaf.
2. Nose load limits and vehicle manufacturers trailer / caravan weight limits must be observed.