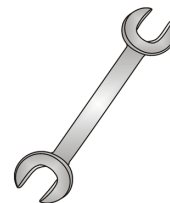




# Tow-Trust Towbars

Important: Please read General Notes overleaf before fitting



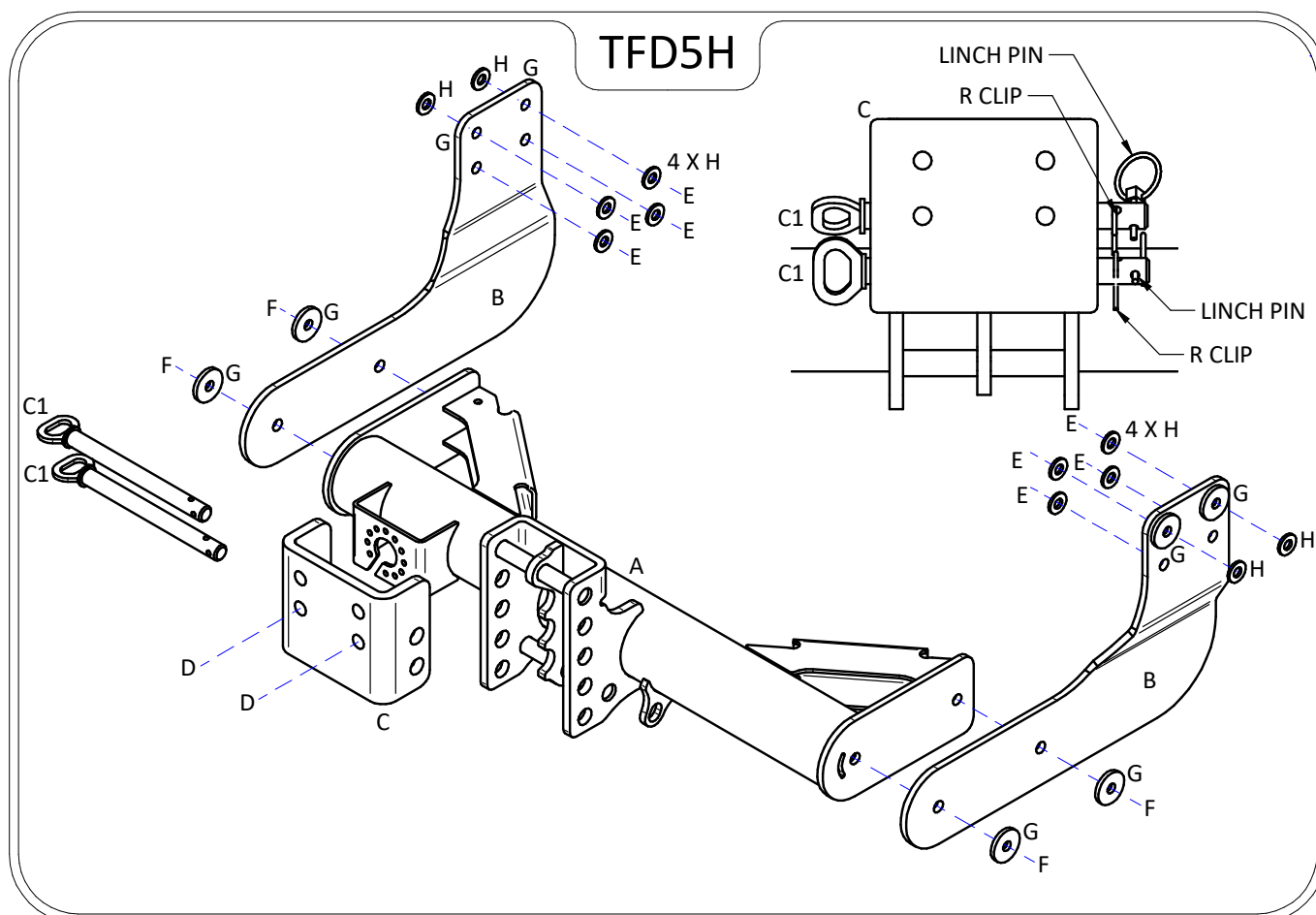
Issue 4

## TFD5H FORD TRANSIT CUSTOM 2012>

Item	Qty	Description	Item	Qty	Description
A	1	Crossmember	D	2	M16 x 60 Bolts & Nyloc Nuts
B	2	Handed Side Arms	E	8	M12 x 100 Grade 10.9 Bolts, 4 Nyloc Nuts & 4 S/P Washers
C	1	Slider Face Plate	F	4	M12 x 40 Grade 10.9 Bolts & Nyloc Nuts
C1	2	Slider Pins & Clips	G	8	12 x 40 Flat Washers
			H	12	12 x 25 Flat Washers
			J	2	M12 Bolt Caps
			K	2	M16 x 50 Bolts

### TOWBAR INSTALLATION:

1. Lower the spare wheel to gain access to Towbar mounting points.
2. Remove the Two fixings each side fixing the bumper brackets to the chassis members.
3. Using Items E with Items H loosely bolt Items B to each correct chassis member using Item G as spacers on the top two mounting holes only each side.
4. Using Items F with Items G fix Item A between Towbar side arms (Items B).
5. Using Items D or Item K bolt your desired ball bracket (Not supplied in this kit) to Item C. (**Std. Ball Setting top holes**)
6. Fully tighten all fixings ensuring Towbar is rigid square and secure.
7. Fit Item C to Item A using Item C1. SEE SKETCH for orientation of clips. (**Std. Ball Setting, Top Setting**)



### Note:

1. Recommended Torque Setting for M12 Grade 10.9 -139 Nm. (For other Torque Settings see notes overleaf.)
2. Nose load limits and vehicle manufacturers trailer / caravan weight limits must be observed.