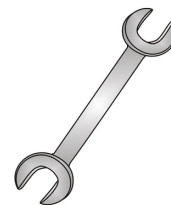




Tow-Trust Towbars

Important: Please read General Notes overleaf before fitting



Issue 10

TFD10H FORD TRANSIT CHASSIS CAB up to 4.7 tonne GVW

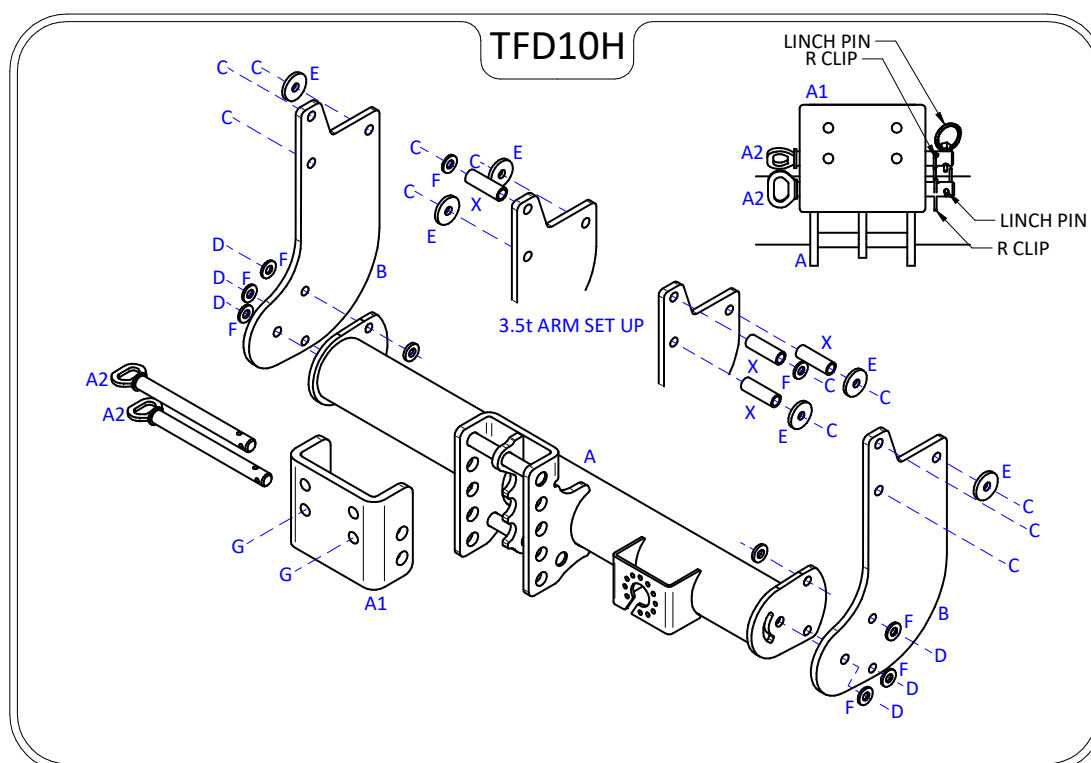
Item	Qty	Description	Item	Qty	Description
A	1	Crossmember	C	6	M12 x 100 Bolts (Grade 10.9) & Nyloc nuts
B	2	Side Arms	D	6	M12 x 45 Bolts (Grade 10.9), 4 Nyloc Nuts & 2 S/P Washers
A1	1	Slider Face Plate	E	8	12 x 40 Flat Washers
A2	2	Slider Pins & Clips	F	12	12 x 25 Flat Washers
X	4	19 x 58 Spacer Tubes	G	2	M16 x 55 Bolts & Nyloc Nuts

TOWBAR INSTALLATION 4.7t:

1. Remove the rear light board. Unplug each light cluster and remove four Fixings either side.
2. Remove three fixings either side securing the rear light board brackets and strengthening tubes.
3. Using Item C and the original chassis strengthening tubes fix Items B to the inside face of each chassis member. Ensure Item E is used on the forward most mounting point on the outside face of each chassis along with the original light board bracket on the rear most mounting points.
4. Using Item D with Item F fix the crossmember between each side arm.
5. Using Item H with Item E bolt the ball bracket (not supplied in this kit) to the mounting plate.
6. Fully tighten all fixings ensuring Towbar is rigid square and secure.
7. Refit the rear light board.

TOWBAR INSTALLATION 3.5t:

1. Remove the two existing bolts securing the towing eye.
2. Open the two lower existing holes and the rearmost upper hole out to 20mm in the outer face only of the right hand chassis member.
3. Open out to 20mm the upper rearmost hole in the outer face only of the left hand chassis.
4. Using item C with item E and item F loosely bolt item B to the inside face of each chassis member. (Bolt through the towing eye on the left, and use item X inside the chassis on the three holes the right and the upper hole on the left).
5. Using Item D with Item F fix the crossmember between each side arm.
6. Using item G bolt your desired ball bracket (**Coupling must have a Minimum D Value of 20.2kN on vehicles above 3.5t GVW**) to the mounting plate.
7. Fully tighten all fixings ensuring Towbar is rigid square and secure.



Note:

1. Recommended Torque Setting for M12 Grade 10.9 -130 Nm. (For other Torque Settings see notes overleaf.)
2. Nose load limits and vehicle manufacturers trailer / caravan weight limits must be observed.