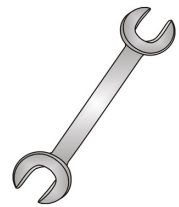




Tow-Trust Towbars

Important: Please read General Notes overleaf before fitting

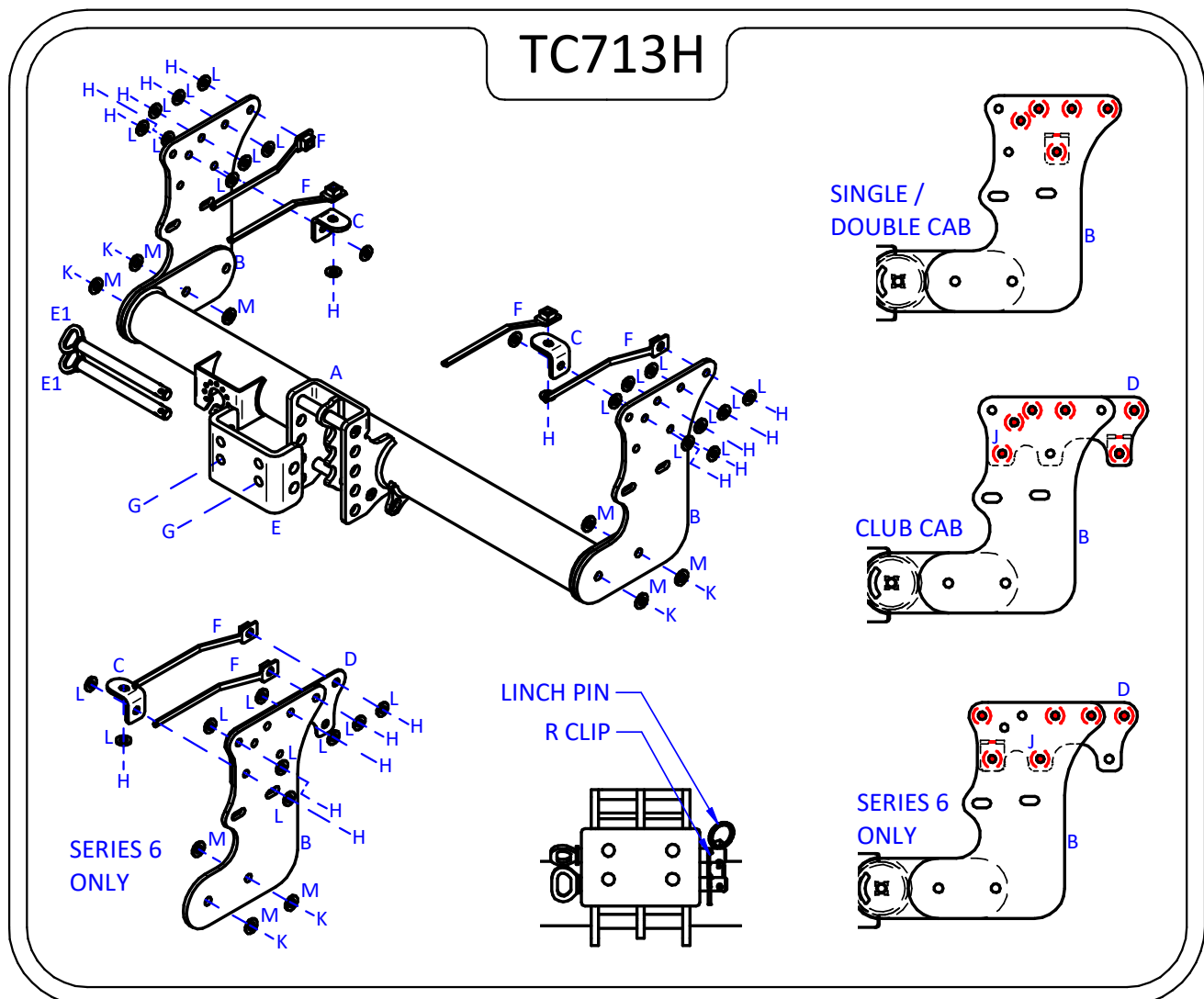


Issue 4

TC713H FIAT FULLBACK 2016> / MITSUBISHI L200 2006> (Inc. SERIES 5 & 6)

Item	Qty	Description	Item	Qty	Description
A	1	TC713H Crossmember	G	2	M16 x 55 Bolts & Nyloc Nuts
B	2	Side Arms	H	12	M12 x 40 Bolts, 8 Nyloc Nuts & 4 S/P Washers
C	2	Angle Brackets	J	2	M12 x 35 Bolts & Nyloc Nuts
D	2	Chassis Adaptors	K	4	M14 x 45 Bolts, Nyloc Nuts & 2 S/P Washers
E	1	Slider Face Plate	L	24	12 x 25 Flat Washers
E1	2	Slider Pins (205) & Clips	M	8	14 x 27 Flat Washers
F	4	M12 Clamp Plates			

1. Remove the two fixings either side securing the under run bar. Discard bar and fixings.
2. Using Item **H** with Item **L** fix Items **B** to each chassis member using Item **F** at the forward most mounting point. (Club Cab & Series 6 models will also require Item **D** to be fitted at this stage, see image below).
3. Locate Item **F** inside each chassis member and line up with the vertical mounting point (Series 6 doesn't use Item **F**), using Item **H** with Item **L** fix Items **C** to Items **B** and the vertical mounting point. (Club Cab & Series 6 models also require Item **J** and Item **L** to fix Item **B** and Item **D** together).
4. Using Item **K** with Item **M** fix Item **A** between each side arm.
5. Using Item **G** fix your desired ball bracket (not supplied in this kit) to Item **E**.
6. Fully tighten all fixings ensuring the Towbar is rigid, square and secure.



Note:

1. Recommended Torque Setting for M12 Grade 10.9 -130 Nm. (For other Torque Settings see notes overleaf.)
2. Nose load limits and vehicle manufacturers trailer / caravan weight limits must be observed.